

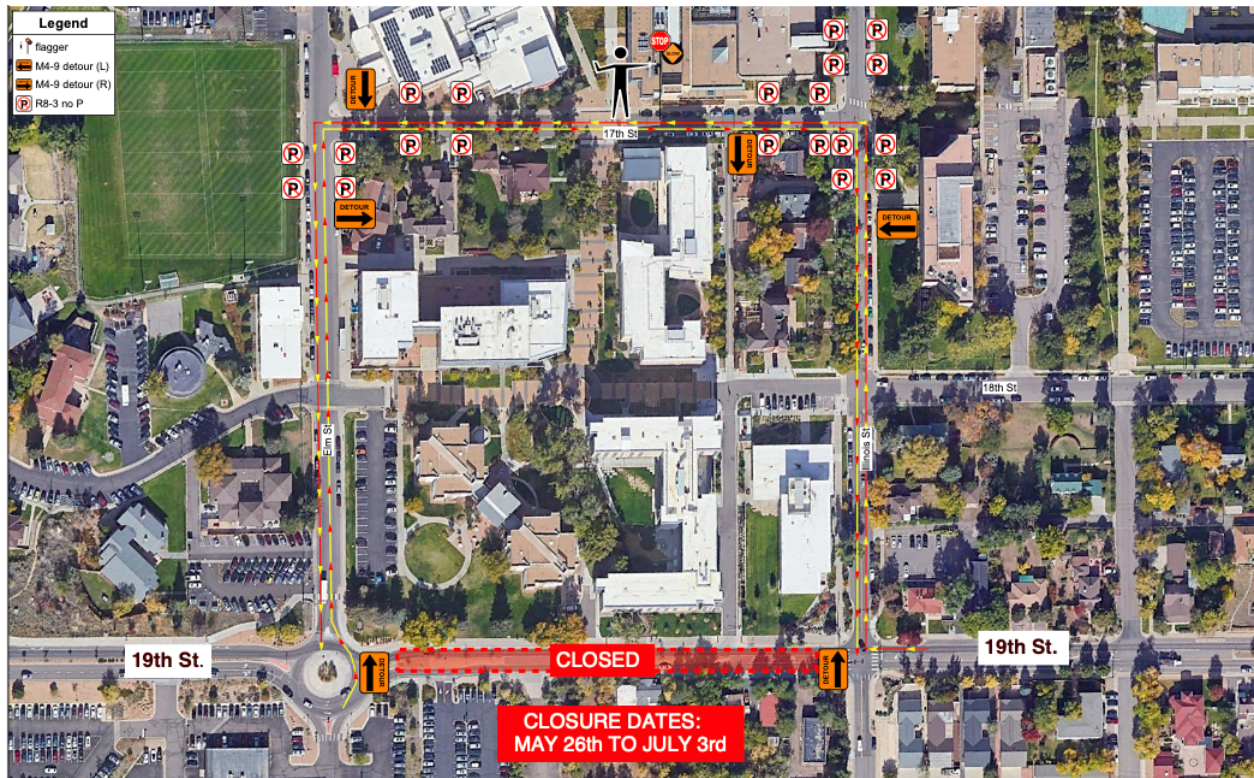
Hello Neighbors,

There are two upcoming road closures in the area of Elm/19th/Illinois Streets that are related to the construction of the sophomore dormitory on the corner of 19th and Illinois Streets. The closures are:

1. **May 19 - 22:** Xcel will be installing power infrastructure assets on the corner of 19th and Elm Streets. This will result in a one-lane closure of Elm Street and/or 19th Street during daytime hours. The lane closure will open overnight during this period. Traffic will be directed with flaggers during this period; please follow directions of the flaggers and use caution in this area during the closure period.



- 2.
3. **May 26 - June 27:** Weitz Construction will be working on the median, sidewalks and HAWK crossing on 19th Street. Both lanes of 19th Street will be closed during this time. The detour will be Elm Street - 17th Street - Illinois Street. Traffic signs will direct traffic on this detour. Please use caution in this area during the closure.



Please let me know if you have any questions.

Traci Case

Chief of Staff

Infrastructure and Operations

Colorado School of Mines