

WARANGA NEWS

Waranga News acknowledges the Traditional Owners and Custodians of the lands and waterways of our distribution area. We recognise their living cultures and ongoing connection to Country and pay our respects to their Elders past, present and emerging.

Published fortnightly since 1978

Serving Colbinabbin, Corop, Girgarre, Kyabram, Murchison, Nagambie,
Rushworth, Stanhope, Tatura, & Toolleen

Print Post Approved PP1000007000

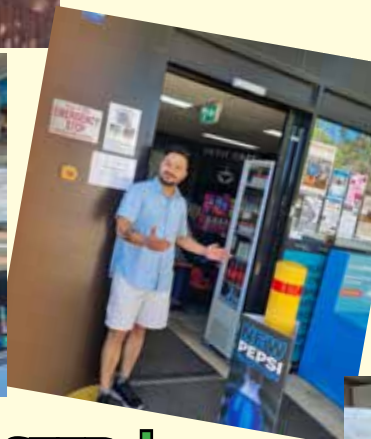
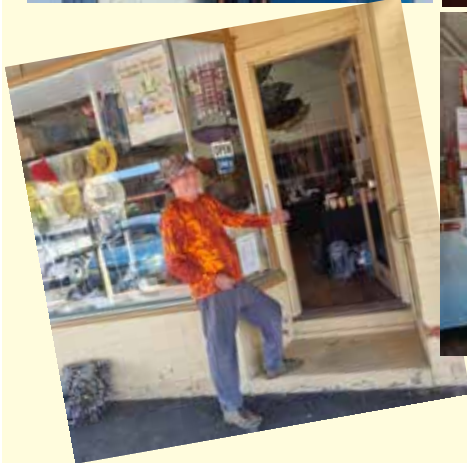
RRP \$2.00

A community newspaper
staffed by volunteers

Thursday 17 April 2025

Showcasing Rushworth at Easter

The sun is shining and Rushworth is all set to entertain again with a full program of activities for the Easter weekend. It's the time of year when Rushworth opens up to the world and our local businesses take the opportunity to display their hospitality and show off all that they offer to visitors and residents alike.



OPEN FOR EASTER !



Rushworth business owners get ready to welcome visitors to the town from the region and beyond.

INSIDE: Anzac Day Services 5, Campaspe vision 7, Federal election - Nicholls candidates 9, Colbo goes to Parliament 11.

Chris Bolton **BOLTON ESTATE AGENTS** 0413 092 698

GVHealth Waranga Health News

April 2025



EASTER CHEER



The Easter spirit brought colour and creativity to Waranga Health this month, with residents and staff working together to decorate and prepare for the season. Craft activities were a highlight, with residents painting and personalising Easter decorations that are now proudly on display throughout shared spaces for all to admire. Waranga Health wishes all residents, staff and community members a very Happy Easter.



STRENGTHENING QUALITY STANDARDS IN AGED CARE

Strengthened Aged Care Quality Standards



From 1 July 2025, the Strengthened Aged Care Quality Standards will come into effect alongside the new Aged Care Act. These updated standards are designed to support aged care providers in delivering best-practice care to residents. At Waranga Health, we have been proactively preparing for these changes, ensuring our team is ready to meet the new requirements and continue providing high-quality, person-centred care. We are committed to staying ahead of industry improvements and look forward to implementing these enhanced standards to further support our residents and their families.

NOTICEBOARD

Community Walking Group

When: Thursdays
Where: Meet at Waranga Health, 14 High Street, Rushworth
Time: 8am - 9am
All abilities welcome

Rushworth AA Group

When: Thursdays
Where: Waranga Health
Time: 7pm
Cost: Free
Contact Jenny on 0430 103 145 for more information

RURAL CAMPUS EDUCATION COMPETITION



Pictured: Tatura Hospital and Parkville Director of Nursing Melissa Jackson and Waranga Health Director of Nursing Nadiene Jerram with competition prizes.



Pictured: Waranga Health staff participating in the Strengthened Aged Care Standards Trivia Standoff. GV Health Tatura and Waranga campuses went head-to-head in a friendly but fiercely fought challenge to see who had the most knowledge about the new Strengthened Aged Care Standards. While Waranga campus took out the quiz victory, it was Tatura campus who claimed the overall trophy, narrowly beating Waranga campus by just 6% in the number of completed education modules. A tight contest that came down to the wire! Congratulations to Sadie Vale (Waranga campus) and Jordyn Dealy (Tatura campus) for taking out the word search challenge, and a huge round of applause to everyone who took part.

SAVE THE DATE

Carer Support Group

When: Thursday, 1 May 2025
Where: Rushworth Community House
Time: 2pm - 4pm
New members welcome
Phone 5851 8026 for more information

Women's Health Clinic

When: Wednesday, 21 May 2025
Where: Waranga Health
Time: 2pm - 5pm
Cost: Free
By appointment only
Phone 5851 8000 to make an appointment.

WARANGA HEALTH - COMMUNITY HEALTH SERVICE

PHONE (03) 5851 8000 FOR MORE INFORMATION ON:

- | | | |
|----------------------|-----------------------|--------------------------------|
| Alcoholics Anonymous | Exercise Physiologist | Women's Health / Sexual Health |
| Country Hearing Care | Podiatry | Nurse |
| District Nursing | QUIT Educator | |
- Waranga Campus Rushworth | P: (03) 5851 8000
E: waranga.admin@gvhealth.org.au | www.gvhealth.org.au

You can keep up to date with what's happening at Waranga Health on Facebook. Like our page at [facebook.com/warangahealth](https://www.facebook.com/warangahealth)



Festival time in Rushworth

A message from the Easter Festival Committee

A great festival is on its way for this year - a fabulous day of free entertainment for the whole family.

All your favourite competitions, over 100 stalls and plenty of entertainment and attractions including the big red dragon maze, steam machinery and vintage and classic cars and trucks. The Easter Bonnet parade and the Doggy Catwalk will feature again and the wood auction run by Shearing for Kids with Cancer will be held at 11.30 am on the corner of School Street and Moora Road.

There will be the usual road closures in place but there is an added bonus of two large parking areas this year. Rushworth Football and Netball Club will be managing parking at Ironbark Stadium and there will be parking available on the old school oval in Tatura Road.

Look out for the volunteers in hi viz vests who will be handing out maps and programs during the day and visit their stall in the middle of the Festival to pick up an Easter Festival bumper sticker.



Festival President and Market Coordinator – Lyn and Peter Reade.

Easter Sunday at Moora Reserve

We are also looking forward to a great day out at Moora Reserve on Easter Sunday.

There is a jam-packed program to keep you entertained throughout the day. The fabulous Clydesdale horses will be taking part in events and demonstrations and working mules will be put through their paces in the arena.

Traditional methods of rope making, blacksmithing, bale loading with a five-horse team will be showcased and there will be brumby and sheep dog trial demonstrations, to name just a few.

There is also a dedicated Kids Corner, lunch time barbeque at the big green shed, a grand parade and lots, lots, more.

Come along and enjoy the day. Entry is by gold coin donation and there is plenty of parking available. Gates open at 8.30am.

See you all at the Festival and Moora Muster!

*Lyn Reade, President
Rushworth Easter Heritage
Festival Committee*



Celebrating 5 years in Rushworth.



Open: Thurs 1-5, Fri 9-5, Sat/Sun 10-3,
Monday 9-1
21 High St Rushworth
"More than just balloons"
Phone: 0418 571 673 Bruce & Gwen



RUSHWORTH METRO FUEL

Oils, car accessories, food, drinks, snacks,
bbq gas, fishing gear, ice and much more!
American snacks and drinks.

Open 7 days - M - F 6am - 8pm W/Ends 7am - 7pm
22 High Street, Rushworth, 3612.
Ph: 5856 1548

Rushworth twins served their country

– John and Bruce Rich

by Tony Ford

Twin brothers were born in Rushworth in January 1916, during the First World War. Both went on to serve in the Second World War, with one of the boys making the supreme sacrifice.

The boys were the only children of Fred and Edith Rich, who lived at No 7 Phillips Street. Fred ran a business in the main street in town and was well known as the bandmaster in the local band from before the time the boys were born until his death in 1940 – over 25 years.

Edith was a multi-skilled woman who served as secretary of the Rushworth Public Cemetery Trust for thirteen years from 1928-41. She was perhaps best known at the time for being credited with discovering two rare orchids in the Rushworth forest. One of the orchids is only found in a small area of forest at Whroo and purported to be the rarest native orchid in Victoria.

Fred and Edith's boys were John Frederick Rich and Thomas Bruce Rich, the latter known as "Bruce". Both boys did their schooling in Rushworth.

The war must have been an extremely difficult time for Edith as Fred had just died and her two boys went off to war. At the time, she moved back to her hometown of Geelong to live with her spinster sister, Margaret.



Bruce Rich

Battalion, reaching the rank of Sergeant by war's end. This service extended for over four years, both within Australia and in the South-West Pacific theatre of war at Morotai and Balikpapan (both in present day Indonesia).

Bruce's service continued until March 1946, when he was discharged in Melbourne. It must have been a great relief for Edith to have her only surviving child home. According to Bruce's daughter, Edith was understandably protective of him for the rest of her life.

John Rich

After serving in the local Light Horse Regiment at Tallangatta, John signed up in the RAAF at the end of 1940. He was a bright young man who for the previous four years had been teaching at primary schools in country Victoria. Firstly, he had been a student teacher at Rushworth, before doing the one-year course at Melbourne Teachers' College in 1936. When he enlisted, John was teaching at Bullhead, a dot on the map in the Mitta Valley in north-eastern Victoria.

Training for the RAAF was quite extensive. After doing courses in three Australian states, John went to Kenya for further training. He became qualified as a Navigator and Air

Observer before being posted to a Squadron.



John Rich

known Martin Baltimore aircraft, a light bomber/long range reconnaissance plane with a crew of four – the pilot, navigator and two WAGs – Wireless Operator and Air Gunners. The squadron served in the desert campaign in the north of Africa. Coincidentally, some of the German and Italian prisoners taken in that campaign finished up in Camp 13 in the local Waranga area.

The tide of war was turning against the Germans in the Mediterranean theatre. After the successful campaign in north Africa, attention turned to retaking islands such as Crete, which were held by the Germans, as a stepping stone to invading Italy.

Eight Baltimores from 454 Squadron were detailed to make a raid on the Germans on Crete on 23 July 1943. It was a disaster, for two main reasons. Firstly, there was a lack of co-ordination, in that the fighters designated to "soften up" the target areas and cover the raid arrived too late. The raid proceeded without that vital support. There was no protection from German fighters. Secondly, the raid was supposed to be timed for when the German gunners were known to have a break from their anti-aircraft guns to have breakfast, but the planners got the timing wrong because of daylight saving, and the Germans were at their guns when the bombers arrived.

The result was that six of the eight planes were lost along with five crews – 20 men. It has never been established what happened to John's plane.

Contact with mother

Five days after John's plane went missing, Edith received a fateful telegram informing her that he was missing in action, but providing few details. It was clear that his plane had been lost as it never returned to base.

The Defence Department then made lengthy enquiries to see whether anyone had survived



Middle East posting

John was eventually posted to 454 Squadron RAAF, which at the time of his posting was stationed in Iraq. By early 1943, the squadron was based at Amiriya in Egypt, near Alexandria. 454 Squadron then flew in the little-

and were perhaps prisoners of the Germans. In a wartime setting, this all took time. Edith had to suffer with the stress of the uncertainty about John's fate. In February 1944, eight months after the raid, Edith was finally advised that John was officially presumed dead. Death certificates were issued.

Memorialisation

Because the circumstances and location of John's death are not known, he has no official war grave. Instead, his name is memorialised at the El Alamein war memorial in Egypt. The Air Forces panels commemorate more than 3,000 airmen of the Commonwealth who died in the campaigns in the Mediterranean, the Middle East and Africa.

John's name also appears on the Rushworth war memorials list of local men who lost their lives in World War 2. Unfortunately, Bruce is not recognised on the nominal roll (those who enlisted) on the Rushworth memorial despite the twins having identical backgrounds.

As John had been teaching near Tallangatta when he enlisted, his name is also listed on the Tallangatta war memorial. His story is summarised in the Education Department of Victoria's War Service Record 1939-45, published in 1959.

Cousins

Although it is not the focus of this story, it is worthy to note that three Rich brothers from another Rushworth family, and first cousins of John and Bruce, served in the First World War and are listed on the Rushworth war memorial. Their father was Edwin, who worked as a carrier between Murchison and Rushworth before the advent of the railway line, then around Rushworth and district after that.

One of the boys, Harry Rich, was killed on the Western Front in September 1918. He was in the same battalion (the 23rd) as Robert Mactier VC of Tatura. They died on the same day and are buried just a few metres apart at Hem Farm War Cemetery in France.

References: Education Department – Victoria, *War Service Record 1939-45*, Ed Dept Vic 1959; Lax, Mark, *Alamein to the Alps – 454 Squadron RAAF 1941-1945*; NAA, AWM, CWGC and DVA websites.



Thomas Bruce and John Frederick Rich, 4 year old twins, Rushworth 1920.

District Anzac services

Colbinabbin Memorial Service
– Service to be held at Colbinabbin Memorial Hall. Assemble at 8:50am, service from 9am–10am

Corop Commemorative Service
– Outside Corop Community Centre, 9.30am–10.30am.

Girgarre RSL Dawn Service
– Service and flag-raising ceremony at Girgarre Cenotaph. Assemble at 5:45am for a 5:50am service. Followed by gunfire breakfast at hall.

Kyabram March & Commemorative Service
– Assembly point for March is Memorial Park at 9.45am. March commences at 9.55am. Service at Memorial Gardens commences at 10am.

Tatura Dawn Service
– Mactier Memorial Gardens, Hogan Street. 5.45am followed by gun fire breakfast.

Tatura 10.30am march followed by Commemorative Service. Assemble for march at Stuart Mock Place. Service at Mactier Memorial gardens.

Murchison Dawn Service
– at 5.30am at War Memorial.

Stanhope RSL Commemorative Service – Sunday 27 April
Service to be held at Stanhope Cenotaph at McEwan Place, from 2pm–2:30pm. Followed by a second service with a guest speaker and afternoon tea at Stanhope Community Hall from 2.30pm–3.30pm.



Kyabram Historical Society window display pays tribute to Anzacs.

Rushworth Hardware

22 Moora Rd

Gas bottle refilling . Building Supplies
PVC Pipe and fittings . Water Tanks
Electrical Supplies and appliances
Power tools . Key cutting
Stock feed . Bird seed
Chainsaw sharpening, chains, spare parts and hand sharpening equipment

A huge range of products and services!
Ph. 5856 1368

Anzac Day agenda for Rushworth

Rushworth RSL has been fortunate to have secured some very interesting and informative guest speakers for the two services to be held on Anzac Day, Friday 25 April.

At the 5.50am Dawn Service we are grateful to once again have Ewen Mclean and his accompanying horses all dressed up in their Light Horse regalia. Ewen will be reciting his very moving and poignant poem, dedicated to the Australian Light Horse in the Middle East during WW1.

We will also have John Gribben, the Goulburn Valley’s most informative military historian, telling us in his words ‘a most interesting story on Ross Gregory’ a Murchison local who flew Lancaster Bombers during the Second World War.

The Dawn service will conclude with a gunfire breakfast put on by our local SES.

The 10am Service will commence with the traditional march from the Post Office to the memorial.

After the wreath laying and the Ode and the Last Post, we are very fortunate to have Dr Seumas Spark, a well known author from Monash University, to speak on the interesting story of the Dunera Boys, who were the mostly innocent men who were shipped out to Australia to spend WW2 in camps between Tatura, Murchison and Rushworth.

Hopefully we will also have our resident bagpiper, Ramon, in action again (if he can get his bagpipe repaired in time).

As is tradition, the Rushworth Citizens Band and the accompanying Buglers will play at both services.

The service will conclude with the National Anthem, then a march past the Aged Care Hostel with eyes right to the residents, to acknowledge the many years

of service to our country by the older generations.

After the conclusion of the 10 am service there will be a morning tea at the former Senior Citizens club rooms, kindly supplied by Col Consiglio and the Red Knights Aus 14.

Both the Dawn Service and the 10 am service have quality guest speakers, so the RSL is hoping for a good roll up to hear them and to show our appreciation for them travelling long distances to come to our town.

Most importantly, we are coming together to commemorate the sacrifice of all the Anzacs who have fought and died for our country over the last 125 years.

*Bill Barlow
President
Rushworth RSL*

Annabelle CLEELAND MP

03 5762 1600 | annabellecleeland.com.au

Proudly supporting the local community

Your local law firm with the legal expertise to best protect and advance your interests.

Litigation and Dispute Resolution

Agribusiness & Water

Property, Planning & Subdivisions

Family Law

Wills & Power of Attorney

Immigration

Employment Law

Corporate & Commercial

Criminal Law

Succession Planning

We know that one person can't be an expert in everything. With the combined knowledge of over 30 lawyers, we can offer our clients access to lawyers with specific knowledge in particular areas of law.

For wise personalised legal advice, please phone our office to discuss.

DAWES & VARY RIORDAN | LAWYERS

Tatura 5824 0300	Shepparton 5820 0200	Kyabram 5851 0200	Nathalia 5866 2655	Echuca 5482 2555	Rochester 5484 1800
---------------------	-------------------------	----------------------	-----------------------	---------------------	------------------------

Have your say!

Readers are invited to contribute their letters, opinion pieces and ideas to these pages.

Historical information invited

Plans are advancing to erect a small information board beside the original Rushworth burial ground in the forest just off the Whroo Road, about 400 metres beyond the Anglican church, so that bushwalkers and other visitors may appreciate the significance of the site.

The project seeks to display information which is as accurate as possible, given that the burial ground was never official, there were no Trustees, and no records have ever been found to show burials from 1853 (when gold was discovered) up until 1861 or 1862. The present Rushworth cemetery's first church-based Trustees were appointed in 1860, though the date the land was formally gazetted for a cemetery has proved elusive, as

has the date of the first burial.

Research has revealed an Eliza Mousley died at Rushworth in 1860. Descendants include the Bell family, Christine Borger being just one.

Other deaths near Rushworth in the named period include Samuel Baldwin (after a fight in 1857), Ann Munroe (died 1857), Catherine Thompson (just two years, 1859), Walter Scott (mine accident, 1860), and James Barr (malnutrition, 1861). James Miller, a Rushworth storekeeper who died in 1860, and Eliza Whitnell, who died in or shortly after childbirth in April 1860, have also been noted. Eliza's twin babies died later that year.

Ah Yea died at Waranga of heart disease in 1858, one of an unknown number of Chinese likely at rest in the old burial ground,

which is in an area known as Chinamen's Flat during the gold rush. (Some locals refer to it as the "Chinese cemetery", but this is not technically correct.)

The planned board will display the names above together with another dozen people who passed away prior to 1862 as "probably" lying in the original burial ground, as no absolute proof is available.

Does anyone have any document, letter, notes in a family bible, or any other record which indicates the name of anyone else who died at or near Rushworth between 1853 and 1862?

"We would not want to complete the board, then find that a name has been overlooked", Alan McLean said this week. Alan can be reached on 0412 143660.

Alan McLean

What do you think?

Contributed by Graeme Hanigan

I hope you're enjoying this series inspired by Melanie Trecek-King, but first let's have a quick recap.

#1 Socrates "the unexamined life is not worth living", and how strong is your epistemology?

#2 How our pattern seeking brains try to make sense of nonsense, this is called pareidolia.

#3 The foundation of science is falsifiability, introduced by the philosopher of science Karl Popper.

#4 How good are you at detecting an illusion, and are you easily bamboozled?

#5 "Quod gratis asseritur, gratis negatur" or 'what is asserted without justification, may be rejected without justification'.

Today we have a look at what is science?

The human brain is a fascinating thing. It's capable of great things, from composing symphonies to sending people to the moon. Its ability to learn and solve problems is truly awe-inspiring. But the brain is also capable of Olympic-level self-deception. When it wants something to be true, it masterfully searches for evidence to justify the belief.

In humanity's search to understand the world around us, the invention of the scientific method was revolutionary. No more relying on our flawed perceptions, superstition and irrational thinking, here was a way of 'knowing', that demanded objective evidence.

The proof is in the results: we owe much of the increase in the quality and quantity of our lives today due to science, so it's no wonder then that people trust science.



Remember epistemology: Do we really know what we think we know?

Our modern day lives are a direct result of Science, so it must be a reliable way of knowing right? Well yes it is, but it must be remembered that science is not 'truth'; the scientific method is a method of seeking what is 'apparently true', and exposing what is false!

Scientists are constantly testing what appears to be apparently true and constantly improving their understanding, as seen in the development of the motor vehicle.

If science didn't learn more, we would still be driving around in one of these.

To understand what science isn't, we have to first understand what it is. There is no single, recipe-like scientific method. It's a way of learning about the natural world, of trying to get closer to the truth by testing explanations against reality and critically scrutinizing the evidence.

Science is reliable because the process is designed to minimize the impact of our biases and root out errors or fraud. Scientists must follow the evidence wherever it leads,

regardless of their beliefs or biases. It's human nature to want to confirm our pet hypotheses, but the ability to find supporting evidence doesn't make them true. Instead, scientists set out to disprove their explanations, and when they can't, they accept them. Before their study can be published in the scientific literature, it must pass peer review, in which other experts critically scrutinize their work.

A critical foundation of science is scepticism, which is simply insisting on evidence before accepting a claim. Scientists are open to all claims, but proportion their acceptance to the strength and quality of the evidence.

Scientific conclusions are always tentative. Each study is a piece of a larger puzzle that becomes more clear when more pieces are put into place. But science doesn't provide absolute certainty—it reduces uncertainty as evidence accumulates. This isn't a bug. It's a feature. There's always the possibility that we're wrong, so we should leave ourselves open to changing our minds with new evidence.

Importantly, science is a community effort, providing a system of checks and balances on the process that helps to correct for biases and identify errors and fraud.

Is science perfect? No. But it's better than the alternatives.

There is only one thing that refutes science? Better science!

I hope you're enjoying these articles on improving your thinking, more of which you can find at <https://thinkingispower.com/> or wait for the next edition of Waranga News.

Melanie can be contacted at melanie@thinkingispower.com

Campaspe Vision developed by Citizen Panel

A community vision for the Shire of Campaspe has been developed by a citizen panel held over three days on the weekend 21-23 March.

Over the three days, thirty-five participants selected from diverse backgrounds across the shire came together to develop the Community Vision 2040 and provide advice to Councillors for the development of the Council Plan 2025-2029.

They engaged in discussions, presentations, Q&As and information sharing, with activities to help articulate their aspirations for the region. The resulting vision emphasizes a welcoming, inclusive, and diverse community with vibrant, healthy, and sustainable places.

Participants were selected after 8,000 letters were sent out across the entire municipality seeking expressions of interest from those keen to participate in the Citizens' Panel. A response was received from 122 people from which the thirty-five panel members were selected.

The selection process was conducted by the Sortition Foundation* and aimed

“Our Campaspe is welcoming, inclusive, and diverse.
Our People are supportive, resilient, and thriving.
Our Places are vibrant, healthy, and sustainable.
Stronger Together, like the three rivers flowing through our shire.”
Vision statement developed by the Shire of Campaspe Citizen Panel.

to represent age, gender and location to achieve fair and broad representation of the community. Of those who replied to the letter wanting to be involved, people were selected from Kyabram, Echuca, Tongala, Yambuna, Echuca Village, Rochester, Lancaster, Kotta, Wyuna and Roslynmead.

During February and March, targeted discussion groups were also held with youth and First Nations people, while a shire-wide

community survey helped gather information for the Panel to consider.

Campaspe Shire Mayor, Cr Daniel Mackrell said that the weekend was a great success and looks forward to using the renewed Community Vision as a guide to the new Council Plan

“The Panel determined how they would work together as a group and how they would reach consensus on a decision and they decided that a 75% super majority was required,” said the mayor.

The new Community Vision is required to go to Council for adoption, and Councillors will be using the key priorities and themes presented by the panel to inform the development of the Council Plan 2025-2029.

Draft versions of both the Community Vision and Council Plan will be available for public consultation later this year, with final adoption scheduled for October 2025.



(Above) The Citizen Panel spent time listening and questioning over three days. (Right) Thirty-five members of the randomly selected panel.

* The Sortition Foundation is a not-for-profit organisation dedicated to advancing democracy through the use of sortition (random selection) to form citizens' assemblies. The foundation envisions a political system where decisions are made by a representative cross-section of society, selected by lottery, to foster informed and equitable governance. It is based in London but has affiliates in other countries, including Australia.

Motofinish Café

Locally Blended Coffee
Wholesome Home-cooked Meals & Snacks
Available for Functions, Birthday parties & Meetings
Open Wed to Sat 8am - 3pm
Sun 9.30am - 3.30pm
27 High Street, Rushworth
Come for a ride and enjoy our home cooked goodies
Bookings: Fiona 0438 018 192

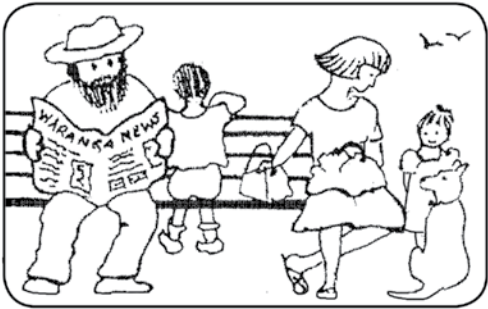
OUR FRIENDLY STAFF LOOK FORWARD TO SERVING YOU!

Check out our weekly and monthly specials on:
GROCERIES FRUIT & VEG
DAIRY & FREEZER MEAT LIQUOR
READY TO GO MEALS & BUTCHER IN STORE
Have you signed up to our REWARDS PROGRAM
Free Home Delivery:
Monday, Tuesday and Thursday Only - cut off time 12pm
Phone : 5856 1441

COGHLAN'S  **plus LIQUOR**

Open 9am to 5pm on Sundays!

Around our towns Around our towns Around our towns Around our towns Around our towns



Around Rushworth

Rushworth or Rootown?

Migrant numbers might be in the news in the current election debate, but the flood of bouncy newcomers into Rushworth is far more topical locally - in fact it's starting to look a bit like a takeover! While we don't begrudge them the feed of juicy green grass on the village green, their lack of hygiene habits leaves a lot to be desired. Whether it's dodging the copious amounts of roo poo after they party in our yards, or dodging the marsupials with no road sense in High St, we will surely be happy (and so will the roos) when the rain gods take pity and make our bush lush and green again.



Red Knights serving up scones for Easter

Their claim to fame might be fighting fires and riding motor bikes but we hear our local Red Knights man is a dab hand in the kitchen. A special attraction at this year's Easter Festival will be their Devonshire Teas served alongside the Easter Art Exhibition at the Rushworth Community Space (former Senior Cits) in Esmonde Street.

Highly recommended that you take some time out from shopping to relax, revive and enjoy the local art!

Tiny Scent And Sew
Handmade Gifts (Locally Owned and Operated)
- Quilted Bags
- Hair Accessories
- Scented Dessert Soy Candle / Scented Soy Candle / Scented Soy Wax Melt
- Bits and Pieces
www.tinyscentandsew.com.au
FB Page: [tinyscentandsew](https://www.facebook.com/tinyscentandsew)
Phone: 0491 653 291
Email: tinyscentandsew@outlook.com

WARANGA NEWS
Yearly Subscriptions
\$65.00 posted - \$30.00 online
Call 5856 1120
or email: wnews@iinet.net.au

Community lunch treat



Guests at the monthly Stanhope Community meal were recently treated to an Indian treat of butter chicken and vegetable rice.

Manu and Priya cooked the meal in the Seniors kitchen and were delighted with the new large stove which has recently been installed. There is now plenty of room for all the pots to be cooking without swapping and managing for the quantities involved.

The meal was absolutely delicious, very tasty, aromatic and good reviews were received from all attending.

There were two guests at the April lunch from Canada as well as one from Shepparton and two residents new to Stanhope.

To add to the excitement of the day, Manu and Priya had received word the night before that Priya's permanent residency has been approved.

Wonderful news for all!

(Left) Priya enjoys cooking on the recently acquired new large stove.

Edward family catch up over lunch



Local bus driver Luke Edward and his family had a lovely catch up over lunch at the Colbo Pub recently. Special guests were Jaimie Tait from Queensland with baby Eloise.

Natrad

20 Campbell Street, Shepparton
Phone (03) 5821 8500
Fax (03) 5821 8462
natrad.com.au

Radiator Service

- Car, Truck, 4WDs
- Repairs, Recores & Assemblies
- Industrial & Agricultural
- Air Conditioning
- 3 year Australia wide warranty

Nip into Natrad

Candidates announced for 2025 Federal election

After a low-key start to the Federal election campaign in our region, the close of candidate nominations on 14 April saw the announcement of those standing for the federal electorate of Nicholls.

The order in which these candidates will appear on the ballot paper, determined by a draw conducted by Divisional Returning Officer Mario Varricchio, is as follows:

Kim Travers of Flowerdale, Australian Labor Party

Paul Bachelor of Echuca, Family First Party

Glen Francis Floyd of Maldon, Trumpet of Patriots

Aarron Tyrrell of Invergordon, One Nation

Sam Birrell of Shepparton, The Nationals

Jeff Davy of Numurkah, Australian Citizens Party

Shelby Eade from the Melbourne suburb of Altona, Greens

The federal election, scheduled for Saturday, May 3, is taking a very different shape in Nicholls from that of the 2022 election, when the long-standing coalition safe seat was challenged by Independent Rob Priestley and campaigning commenced months before the election date was announced.

While the challenge carved a hole in the traditional coalition vote, it was not enough

on the day to sway the rural heartland of Nationals voters. Results varied widely across the electorate, with a number of Shepparton booths favouring Mr Priestly.

The Nationals retained the seat, despite a swing of 24 per cent away from their 2019 result, and Shepparton’s Sam Birrell secured his place in Canberra for the next three years.

It was clear that the Independent vote diminished the further away it was from the regional city. In Colbinabbin, for example, In Colbinabbin the Nationals secured about half the vote, with the Independent less than 20 per cent.

Federal redistribution

Following the 2024 federal redistribution, the Division of Nicholls underwent boundary adjustments that affected its composition for the upcoming federal election. The electorate gained around 7,400 voters in Kilmore from McEwen and lost about 900 voters to Bendigo.

The redistribution aims to balance the number of electors across divisions, resulting in the redrawing of boundaries and a movement of certain areas into and out of electorates.

The Division of Nicholls encompasses a significant portion of northern Victoria, including towns such as Shepparton, Yarrawonga, Seymour, Echuca, and Broadford.

Wasted votes

A concerning local aspect of the 2022 election was the extent of the informal vote. In Rushworth 11.28% of votes cast were wasted votes. In the 2019 election the electorate of Mallee had made the news for being the highest informal vote rate in Victoria at 11.2%, more than twice the national average of 5.5%. Rushworth infamously beat this record.

Whether these informal votes are deliberate or the result of incorrectly filled ballots, it is a reminder that a well functioning democracy depends on an informed population waying up the pros and cons of each candidate (and/or party) and casting a vote that will be counted.

In the next edition of the Waranga News we will feature some ‘refreshers’ about our voting system and a look at some of the top issues that have emerged as the main talking points of this election campaign.

Campaspe’s bin win for sustainability

A recent audit on kerbside recycling contamination has shown positive change by Campaspe residents when recycling at home. Overall, recycling contamination has reduced by nearly 4% since 2024, with bagged recycling and soft plastic contamination also showing a promising decline.

Commending the community’s efforts, Campaspe Shire Mayor Cr Daniel Mackrell said the proper use of the yellow lid recycle bins, together with drop-off points for clothing and electronic waste, ensures that materials can be reused where possible and saved from landfill.

To assist with educating the community on recycling correctly and reducing contamination, Council was successful in a grant application to Sustainability Victoria (SV) for education on the topic. Messaging to encourage residents to recycle their items

loose and ensure only recyclable items go into their yellow bins was shown across radio, e-billboard, mobile billboard, cinema and social media advertising.

To make recycling easier, the grant funding will also be used to create and deliver a ‘Quick Sort Guide’ fridge magnet to all residents. At a glance, the guide will provide clarity on which bin different waste items should go into.

Council’s Director of Sustainability, Michael Sharp, emphasised the importance

of ongoing improvement.

“Clothes, e-waste and soft plastic packaging contaminate the kerbside recycling stream. They cause problems with sorting machinery and don’t belong in yellow bins. E-waste can also cause fires in trucks and sorting facilities,” Mr Sharp said.

To find out where and how you can dispose of waste items Australia-wide, check out recyclemate.com.au
For Council’s A-Z and quick sort guides, go to campaspe.vic.gov.au/WhatBin



Central Vic Epoxy Flooring

We transform old and new concrete surfaces using only the highest quality and technologically advanced epoxy and decorative flakes system.

admin@centralvicepoxyflooring.com.au

Phone 0419 219 707 (Simon)



Proudly Servicing the Tatura region & beyond since 2020

MAINTENANCE & GENERAL ELECTRICAL • POWER & DATA • NEW BUILDS • RENOVATIONS • RURAL ELECTRICAL • CCTV • COMMERCIAL ELECTRICAL

 JOSHUA McRAE

 0477767679

 jmcrac@loddonelectrical.com.au

Local trio Angelus on a roll

The team at the Nathalia G.R.A.I.N. Store recently heard Angelus play at one of their ‘Festival of Small Halls’ support gigs. They were so impressed that the band was booked for a full gig at the regional arts venue.

The G.R.A.I.N. Store is a not-for-profit, nationally recognised rural arts center with a history of exhibitions, performances and workshops located in a converted grain store shopfront in the middle of Nathalia.

The venue fosters art which furthers community, the environment, rural health, reconciliation and education locally, statewide and nationally while contributing to the economic development of the area.

And this is the gig Angelus has been jamming for!

“A venue that supports artists to take the plunge with their original work! We know that doesn’t sound like a big deal. Musicians play their own stuff all the time. But breaking the bond with cover music is a leap of faith and we’re ready to jump,” says lead singer, Louise Costa.

“We’ll still play a few of our (and your) favourite versions but we’re also planning to introduce a bunch of Julie’s catchy croons and a few melodic poems with our new mates, Em and her cello.”

Organisers at the G.R.A.I.N. Store are promoting the event.

“We’re so excited to welcome Angelus —a trio of musical soulmates blending heartfelt harmonies, original songs, and a touch of whimsy (and yes, the occasional kazoo solo).”

It is on Friday 2 May. Tickets are on a pay-what-you-can flexible price points from as cheap as \$10, so make sure you book now at <https://www.trybooking.com/DARZP> to get a seat!

Snow, Fire and Gold

The Tatura Library will welcome author Stephen Whiteside to speak about his latest book Snow, Fire and Gold on Wednesday 30 April at 10.30am.

The book tells the story of Spargo’s Hut and the people that lived in it - Alpine gold prospector Bill Spargo and his English wife Evelyn Piper. This event is part of National Trust Heritage Festival.

Stephen first heard about Spargo’s Hut, above the snowline near Mt Hotham, in 1972, but did not get a chance to visit it until 1982. While he was aware it had been abandoned for many years, he was shocked to discover it was still jammed full of all the articles required for everyday living.

After several more visits and extensive research including interviews with family members and people that lived in the area, research into old newspapers and letters, the story of Bill and Evelyn came together and Stephen was able to both publish his book and successfully nominate Spargo’s Hut for registration with Heritage Victoria.

If you would like to meet Stephen and hear about Snow, Fire and Gold at Tatura Library on Wednesday 30 April at 10.30am you can book online via www.gvlibraries.com.au/events.



The popular trio Angelus: Louise, Julie and Emma

Rushy Mums and kids relax

Rushy Mums is a group formed late last year for mums to connect and support each other - especially new mums. With Friday morning playgroup currently in recess for school holidays the group decided Geyle Reserve in this mild weather was the perfect venue for a playdate.



Enjoying a relaxing time in the sunshine were Jayed with Florence and Hazel, Tahlia with Bodie, Ash with Logan and Killian, Courtney with Clara and Finn, and Kylie with Ryan. (Some families had left before the Waranga News photographer arrived.)

Colbinabbin community fronts Parliament

It was a packed gallery at Parliament House last Wednesday (2 April) when the the Colbinabbin Renewable Action Group (C.R.A.G) together with farmers and residents of Colbinabbin took their fight against the Cooba Solar Project to the Victorian Parliament. The large-scale solar farm, planned by Venn Energy, proposes to cover 665 hectares of current farm land in the Heathcote wine region, raising concerns among the community about its impact on farming, tourism, and the local environment.

The Colbinabbin contingent was there to witness Liberal and National MPs call on State Government Minsters to reject Venn Energy’s Cooba Solar Project planning permit.

The proposed solar farm has faced widespread opposition from the Colbinabbin community, including winegrowers and farmers, who argue that it threatens the region’s agricultural productivity and tourism appeal. Concerns expressed include potential changes to the microclimate, visual impacts on vineyards, and the loss of valuable farmland. The Campaspe Shire Council has also opposed the development, citing its strategic fit and economic benefits.

The site was chosen by Venn Energy due to its proximity to an existing transmission line, allowing for easy connectivity to the grid, along with the site’s open solar exposure and the absence of native vegetation.

During the sitting, the five coalition members launched an adjournment campaign, urging ministers to reject the planning application. Addressing the Minister for Planning, State Member for Northern Victoria Wendy Lovell claimed the project contravenes planning guidelines by taking valuable agricultural land out of production and negatively affecting the landscape and views. She said the site would be an eyesore and economic blow for the local visitor economy and viticulture hospitality industry.

Ms Lovell also noted that the site is adjacent to major road infrastructure, has good water access, and is connected to the Colbinabbin-Cornella irrigation pipeline, making it a strategic agricultural area that should be protected.

Further representations were made by Nationals’ Member for Northern Victoria Gaelle Broad and Liberal members David Davis, Richard Welch and Joe McCracken.

Ms Gaelle called on Agriculture Minister Ros Spence to reject the application as the site has soils that are unique to the area, it has access to irrigation and grows a variety of grain, viticulture, horticulture and livestock, all for the domestic and overseas markets.

State Member for Southern Metropolitan



The Colbinabbin community and supporters who took their cause to the Victorian Parliament.

and opposition leader for the legislative council David Davis called on Energy and Resources Minister Lily D’Ambrosio to ensure “guidelines are adhered to” and noted there are already thousands of hectares of solar developments approved in the area. Mr Davis called for a stop to further wide-spread loss of agricultural land and further adverse visual impacts and impacts to biodiversity, habitat and wildlife.

Liberal State Member for Western Victoria Joe McCracken called on Emergency Services Minister Vicki Ward to have greater consultation with ministerial colleagues to fully understand the impacts and risks to communities and from an emergency services perspective.

Liberal State Member for North-Eastern Metropolitan Richard Welch addressed Tourism Minister Steve Dimopoulos, saying the development would dominate the landscape, disrupting views at neighbouring properties and wineries and destroying their “microclimate and potentially their business”. He described the region as an emerging destination, often referred to as the

up-and-coming Barossa Valley.

Lastly, Liberal State Member for Western Victoria Bev McArthur addressed Local Government Minister Nick Staikos regarding local government’s authority in the decision process for renewable energy infrastructure. She said regional communities are bearing the brunt of a state-driven renewables agenda in which they have to say.

The Nationals’ Member for Euroa, Annabelle Cleeland, who joined the Colbinabbin group on their visit, said the project was putting the local community at risk.

“This project represents an unacceptable threat to our community, our farmers, local businesses, and the very foundation of the local economy,” Ms Cleeland said.

As of now, the planning application is under consideration by the state Minister for Planning, while the community continues to press for the company to seek an alternative site for the renewable energy project.



Catherine Fraser
Civil Celebrant

Celebrating Marriages and Funerals

293 Hill Road
Stanhope VIC, 3623
catherinemarycelebrations@gmail.com
0427 572 549

COLBINABBIN

GENERAL STORE

CO-OP

PHONE: **5441 5807** SMS FOOD ORDERS: **0472 569 208**

AUSTRALIA POST

HOURS: 8.30am - 4pm, Mon- Fri

BANKING: @post bill pay - cheque & cash deposit
withdrawals - Money orders - Western Union

Stocking a wider range of post packaging for all of your
business needs - Parcel pick up any time during shop
hours - Phone recharge vouchers

SHOP HOURS:
7am - 5pm, Mon - Fri | 8am - 2pm, Sat - Sun

BREAD DELIVERY:
Mon - Wed - Fri

FRUIT & VEG DELIVERY:
Wed - Fri

MEAT DELIVERIES:
Fri order by 3pm Thu



Rushworth

COMMUNITY HOUSE INC.

67 High Street Rushworth 3612

Phone (03) 5856 1295

Email:
admin@rushcomhouse.org.au

Website:
www.rushcomhouse.org.au

Facebook:
Rushworth Community-House

Office Hours:
Mon, Tues Thurs : 9.00am to 3.00pm
Wed, Fri : 9.00am to 1.00pm



Your local access
point for Medicare,
Centrelink and other
Australian
Government services.

RCH termite damage repairs progressing

Three months after the discovery of major termite damage to two rooms at the Community House, recovery work is progressing well, with repairs expected to be completed within the next few weeks.

Local cabinet maker Peter Knobel is part way through the fit-out of the kitchen, which is already looking good with some superbly crafted cupboards and drawer spaces already in place, awaiting benchtops (*photo below left*).

In the meantime, the House's normal kitchen contents are temporarily stowed in the newly renovated book-keeper's office (*photo below right*) pending their relocation into the new kitchen sometime in May.



Aged Care Services Expo Success



Last Thursday, Rushworth Shire Hall resounded to the bustle of the town's first Aged Care Services Expo, a joint venture between Rushworth Community House, Campaspe Shire and Goulburn Valley Health (*photo above*).

Representatives from multiple aged care support organisations gathered in Rushworth to acquaint people with the wide range of services that can be provided for them.

Starting at 10.30am and running till early afternoon, the Expo allowed service providers to meet locals, answer their questions, demonstrate products and give them advice about how to address their own aged care issues or those of family members and friends.

The event was also a great opportunity for service provider staff and volunteers to network with one another and explore ways to deliver their services according to needs.

The 2025 Expo was successful and it's likely we can expect further such events in the future.



(Middle) Multiple service providers made the event really worthwhile for attendees.
(Above) Transport Coordinator Craig discusses options with a potential client, while RCH personnel Prue and Rhoni canvas other services with House Manager Anita Pirie.

Arts & Tourism

Places to stay, things to do and see in our district

This page is proudly
sponsored by:



www.kennedyvintners.com.au

Decades of a Wet Palette exhibition opens in Kyabram

Last Saturday guests had a great afternoon celebrating Glenda Cornell's exhibition, *Decades of a Wet Palette*. Over sixty friends and admirers attended the opening, which was officiated by Cr Paul Jarman and included collectors of Glenda's work and several of her former art students.

Glenda gave a good overview of her career in art including teaching from her gallery in Nathalia, her art van selling supplies to artists around the district and now culminating in her Whistle Stop Gallery in the port precinct in Echuca.

The exhibition can be seen at the Kyabram Town Hall Galllery until 30 May.



Some of the gathered crowd attending the opening.



Cr Paul Jarman and Glenda Cornell during his opening address.



After the before (2022 flood) graphite and watercolour by Glenda Cornell

ART Exhibition
Easter Saturday
until 2.30pm
Rushworth
Community Space

(old Senior Citizens Rooms)

Devonshire Tea available
with Red Knights

Rushworth Artistries and
Rushworth ART Depot

Kennedy Shiraz 2019, Kennedy Cambria (Reserve) 2014, Kennedy Pink Hills Rosé 2021, Henrietta Shiraz 2020
Henrietta Rose 2022 available online and being served at Colbinabbin Country Hotel.

Cooks Corner

Anne's chocolate cake

I've told you before that I can't do light and fluffy – which is why I don't cook sponges or cakes much. But my daughter's friend, Anne, assured me that this was an easy-peasy, one bowl, one spoon chocolate cake – that ANYONE could make.

I especially liked the sound of the 'one bowl, one spoon' – not too much mess to clean up.

And this is how it goes . . .

- Mix 1 tblspn white vinegar with 1 cup of evaporated milk.
 - Sift 1½ cups sr flour, pinch salt, ½ cup cocoa
 - 1 tspn cinnamon
 - 1½ tspn bicarb soda
 - 1¼ cups castor sugar into a bowl.
 - Add 155g melted butter
 - 1 tspn vanilla
 - 2 eggs and the soured milk.
- Beat vigorously with a wooden spoon until smooth (if you use up a few calories making it, you can eat a bigger piece when it's

cooked). Bake in two greased, paper-bottom-lined, 20cm round tins. Bake at 180°C for 30-35 minutes.

When cool, you can sandwich them together with jam and cream and dust with icing sugar as Anne does. Or, because I couldn't be bothered going out to the shops to buy cream, I cooked mine in a lamington tin and iced it with coffee icing (holding back on sprinkling with coconut so I wouldn't get complaints from my false-toothed friend who says it gets under his plate!)

Glen



Coffee-iced chocolate cake/slice.



Chocolate cake as Anne finishes it - sandwiched together with jam and cream and a dusting of icing sugar.

Handy Hints

- from Lyn Rumble

Hi there,
Repurposing or re-using everyday items - or quick and easy solutions to general household issues that you hadn't thought of - is what I like to do. This issue its mostly saving some time in the kitchen – or getting a better result ! Hope these hints come in handy for you in your everyday quest to save money, repurpose things or perhaps just think outside the box a bit!

*** Crock Pot and Pressure Cooker cooking** for your pet is ideal! If you're worried about what is in tinned pet food – answer is cook it yourself then you would know. There are some great recipes out there for pets, and the beauty is you're making it in bulk and, depending on serving size, would last just about a week – well does for my dog anyway! It's cheaper buying bulk chicken or blade beef, some brown rice and suitable vegetables, and they just love the stock as well! Winner all around including my purse!

*** Smelly kitchen from cooking vegetables.** Cauliflower, cabbage, sprouts etc. can get smelly when boiling in water but if you add either a slice of lemon, a teaspoon of rice, or one bay leaf to the cooking water with the veggies it should eliminate that smell!

*** Shelling fresh peas?** – don't have to any more if you wash the whole pods clean, then drop them into a saucepan of water (just enough to cover) and bring to the boil. After a few minutes of boiling, the pods will rise to the top and the separated peas will be at the bottom of the pan of water. Excellent retention of flavour cooked this way!

*** Most herbs can be frozen when plentiful** - just chop finely and put them in freezer bags or in ice-block trays with an amount of water in each, then it's just a matter of taking out the amount you need for your dish you're cooking! Lasts a lot longer than fresh and tastes just as good!

*** Roasted potatoes with a difference.** Ever thought how much better can roast potatoes get? Well try this, partially cook in the oven, then get a packet of soup-in-a-mug mix, and sprinkle over the partially cooked roast potatoes, give them a toss, and then continue to cook until done. A real refreshing taste difference in your favourite soup mix!

Garden Hints & Tips

Tree Group turns 40 and Biodiversity Day approaches

Fortieth birthday celebrations took place at Goulburn Valley Tree Group's native nursery at Kerferd Street, Tatura Tuesday morning 18 March which also was the official opening day for sales.

There were many past volunteers present which was a really wonderful opportunity to catch up and hear some really interesting and amusing stories about the group in it's earlier days and how they worked with such limited resources. Its a credit to them and their achievements. We are very proud that our group is still providing native plants for our very loyal and new customers.

Save Saturday morning 3 May in your calendar for our very successful annual Biodiversity Day.

Presenters on this free day will include Kirsty From Bohollow Wildlife rescue and rehabilitation, Clancy Lester discussing the secret lives of our native bees, John Laing's Mini Beasts with his crawling spiders and other small creatures and Kylie Hoskin from COGS

Environment Dept talking about the benefits of planting indigenous species of plants on your property.

There will be lots to see and learn and the kids will get some wonderful hands on experiences with our native creatures and plants.

Morning tea is provided including the always popular sausage sizzle.

We look forward to seeing you there for a morning of lots of informative fun for everyone.

After the rain it's happy planting time!

Goulburn Valley Tree Group
Native Nursery
6 Kerferd Street, Tatura
Open Tuesday and Saturday mornings.



Health and Wellbeing

Try meditation for stress relief

Meditation offers a wide range of health benefits for both the mind and body. One of the most well-known effects is stress reduction. By encouraging relaxation and mindfulness, meditation helps lower levels of cortisol—the stress hormone—which can reduce anxiety, tension and inflammation in the body.

Regular meditation also improves focus and emotional well-being, fostering a greater sense of calm, clarity and resilience to daily challenges.

Physically, meditation can lower blood pressure, improve sleep quality, and boost the immune system. It has been shown to enhance brain function by increasing grey matter density in areas related to memory, self-awareness, and emotional regulation. This can help improve attention span, memory, and decision-making skills.

Meditation has also been credited with managing symptoms of chronic conditions such as pain, depression and anxiety disorders. It provides a natural, low-cost method of improving quality of life without side effects. Whether practised through mindfulness, breathing exercises, or guided visualisation, meditation can support a healthier lifestyle overall. With regular practice—even just a few minutes a day—people claim to experience increased happiness, better health outcomes, and a deeper sense of connection with themselves and the world around them.



Early flu season prompts vaccination advice

Early flu vaccination is being strongly recommended in Australia for 2025 due to a significant surge in influenza cases and concerns about declining vaccination rates.

According to an ABC report (12/4/25) Australia has recorded over 48,000 flu cases—a 59% increase compared to the same period in 2024. Victoria alone has reported more than 10,000 cases, nearly doubling last year’s figures. Health authorities are urging the public to get vaccinated in April to ensure peak protection by June and July, the typical flu season.

In 2024, Australia experienced a record number of influenza cases, with 364,894 reported. However, less than a third of Australians received a flu vaccine that year. With more than 30,000 cases already recorded in 2025 and the flu season starting as early as March, health officials are urging the public to get vaccinated early.

Who should get vaccinated

The Australian Government recommends that everyone aged 6 months and over receive an annual influenza vaccine. The vaccine is free under the National Immunisation Program (NIP) for:

- Children aged 6 months to under 5 years
- Adults aged 65 years and over
- Pregnant women
- Aboriginal and Torres Strait Islander people aged 6 months and over
- People with certain chronic medical conditions

In Queensland, all residents aged six months and over are eligible for free influenza vaccination under the 2025 Queensland Free Flu Vaccination Program.

When and where to get vaccinated

Vaccinations are recommended from mid-April onwards to ensure optimal protection during the peak flu season, which typically runs from June to September. Vaccines are available at general practices, pharmacies and through workplace programs.

Vaccine effectiveness and co-administration

Flu vaccines reduce the risk of GP presentation with influenza by around 30–60% and hospitalisation with influenza by about 50–70%. The flu vaccine can be administered alongside other vaccines, including COVID-19 vaccines. However, it’s advisable to consult with your healthcare provider to determine what’s appropriate for you.

Given the early onset of the flu season and the rise in cases, GPs are advising patients to get vaccinated promptly to protect both themselves and vulnerable populations, and so reduce the strain on the healthcare system.



Geoffrey Lipshut

Accepting Instructions in

- Wills & Estates
- Powers of Attorney both Enduring & Medical
- Property and Conveyancing
- Notary Public
- General Legal Advice
- Secure document storage available

~ Over 40 years experience ~
Personal Service • Reasonable Fees



Now at 6 Francis Street Tatura
Mailing Box 211, Tatura, 3616
geoff@lipshutlaw.com.au

Office: 5824 1503
Mobile anytime: 0417 134 929

Kyabram Lymphology Australia

Helping you heal naturally

- Lymphatic drainage/Lymphedema massage
- Therapeutic, Sports, Relaxation massage
 - Pre/Post surgery Lymphatic massage
 - Pain and stress relief

Jutta Clarke 0490 410 887

email: lymphologyaustralia.kyabram@gmail.com
Insta: @kyabramlymphologyaustralia



MUD HUT YOGA
Peace ~ Flexibility ~ Strength

For class times &
information
contact Sue Barlow

0438 523 415
sue@mudhutyoga.com.au
www.mudhutyoga.com.au

From trading nutrients to storing carbon: five things you didn't know about our underground fungi

By Adam Frew

Lecturer in Mycorrhizal Ecology,
Hawkesbury Institute for the Environment, Western Sydney University

If you're walking outdoors, chances are something remarkable is happening under your feet. Vast fungal networks are silently working to keep ecosystems alive.

These fungi aren't what you might picture. They are not mushrooms or brightly coloured growths on tree trunks. Arbuscular mycorrhizal (AM) fungi look like spools of thread wrapped around plant roots.

What makes these fungi remarkable is the deal they struck almost half a billion years ago with another kingdom of life – plants.

AM fungi make threads of hyphae thinner than spider silk and weave them through plant roots. Then, they begin to trade, offering plants water and phosphorus, a vital plant nutrient in soils. In return, plants offer carbon-rich sugars and fats from photosynthesis. Fungi can't photosynthesise, but plants can.

This symbiotic relationship can help plants survive periods of drought and live in nutrient poor soils. More than 80% of all plant families rely on these fungi, while AM fungi cannot live without plants.

Without these fungi, many of Australia's plants — and the soil they grow in — would be in real trouble. Our continent is ancient, dry and nutrient-poor. While we monitor the fate of plants and animals in response to human impact and climate change, we haven't been tracking the fungi who support it all. We don't even know how many species there are, let alone if we're losing them.

To help fill this gap, I have developed the first dedicated database recording species and distributions of AM fungi in Australia – AusAMF.

The underground economy of roots and filaments



Arbuscular mycorrhizal (AM) fungi form networks of thin filaments creating living pipelines connecting plants and the soil. The fungi are vital to most terrestrial ecosystems. Author provided

AM fungi deserve to be better known. These essential companions to most of the world's plants maintain plant diversity, suppress invasive species, store carbon, cycle nutrients and prevent soil erosion.

Here are five remarkable things about AM fungi:

1. They're older than roots

Incredibly, this fungus-plant symbiosis

emerged before plants evolved roots some 360–420 million years ago.

AM fungi have been around for 475 million years, partnering with very early land plants such as the ancestors of today's liverworts – which have no roots. This ancient alliance actually helped plants colonise land.

2. They can boost native plants and reject invasives

AM fungi do more than transport nutrients, carbon and water. They shape entire plant communities. Some plants benefit more than others, influencing competition and species co-existence. By giving some species a competitive edge, AM fungi allow some plants to survive which might otherwise be lost.

When AM fungal diversity declines, it can lead to a loss of native plants and open the door to invasive plant species.

But with the right management — such as reducing pesticides or reintroducing locally adapted fungi — AM fungi can boost plant nutrition and ecosystem restoration. They can help native vegetation recover and stop invasive species from gaining a foothold.

3. They run an invisible underground economy

The fungi-plant trade is more organised than you might think.

In some instances, plants reward the fungi giving them the most phosphorus with more carbon, while the fungi prioritise plants offering them the most carbon – a bit like a marketplace. Some plants have figured out how to cheat the fungi, taking resources without giving anything in return.

4. They boost plant defences against pests and disease

Fungi don't just help plants grow, they help them fight. As AM fungi colonise a plant's roots, they boost its defences against threats such as diseases and plant-eating insects by strengthening and speeding up chemical responses. My research shows the size of this fungal-defence boost for plants can depend on what AM fungi are present.

And if one plant is attacked, it puts out chemical signals which can move through the fungal network and let other plants know to ready their defences.

5. They take in vast amounts of carbon

Plants take carbon from the atmosphere and store it in their leaves, roots and wood. But AM fungi store carbon from plants too.

Because mycorrhizal fungi are found

wherever there are plants, their underground networks are vast – and so is their carbon impact. Recent research estimates the annual figure is more than a third of global fossil fuel carbon emissions.

Vitally important, all but unknown

If AM fungi vanished, many plant species would likely follow suit. Others would become more vulnerable to drought, disease and pests. Soil would erode more easily and nutrient and carbon flows would shift dramatically.

Are they in trouble? We don't know. AM fungi are out of sight, out of mind. No federal or state government agency seem to be tracking them. Our current National Soil Action Plan doesn't mention fungi at all, despite their importance to soil health.

Other than Antarctica, Australia is the least sampled continent for soil AM fungi, with just 32 sites in global databases. Europe, by comparison, has data from more than 1,200 sites.

That's where I hope the AusAMF database will help. I partnered with landholders and research networks to gather soil samples. So far, the database has data from 610 locations, with about 400 more on the way.

But this is still scratching the surface. AM fungal communities can differ between neighbouring fields or habitats, depending on land management methods and types of vegetation. Virtually all current records are a single snapshot in time — we lack the long-term monitoring needed to track seasonal or annual changes.

It would be a mistake to remain in the dark about AM fungi. The more we learn, the more we see their importance, not only in supporting biodiversity, but in helping our crops and ecosystems cope with a changing world. If they are in decline, we need to know – and set about protecting them.

Originally published in *The Conversation*
Republished under Creative Commons license.

• Adam Frew receives funding from the Australian Research Council and the British Ecological Society.

ON THE BRINK *by Neil Laurie*

Looking at endangered or extinct flora and fauna.

The majestic mountain ash

The mountain ash (*Eucalyptus regnans*) is not an endangered species; it is actually doing quite well. What is rare are the mature mountain ashes. They are big...very big and are considered by many to be the biggest living organism on the planet. They are certainly the tallest flowering plants; growing to around 90 metres or more with a trunk that is a good 2.5 metres in diameter at breast height. Seeing one of these giants fills you with awe. They are fast growing and typically live for more than 120 years with the oldest example known being 500 years old. They grow in the sub-alpine temperate regions of Victoria and Tasmania and have been extensively logged for their strong, straight-grained hardwood.

When a mountain ash dies and falls it triggers a race for the sky as hundreds of seeds germinate in the vacated space. Only one or two saplings, the strongest and fastest growing, will survive to maturity. Mature trees that become taller than the surrounding canopy are vulnerable to having their tops blown off either by wind or lightning strikes. As a tree ages it becomes hollowed out. The hollows provide shelter for many species also make trees susceptible to fire which can bring them down. Trees can also topple in wet years if the soil becomes waterlogged. Stands of mature trees only occur in old-growth forests (never logged). The only old-growth mountain ash forest left in Victoria is the Erinundra Plateau. Now a national park it was the centre of anti-logging protests in the 1980s.

A glimpse of what these majestic forests were like can be seen while walking through forests that were logged prior to the mechanisation of timber production. The trees have grown to be quite big and there is a healthy and varied understory of tree ferns and other shrubs. Dotted throughout are the massive stumps. These are three or four metres tall, with the notches cut to hold the boards that the foresters stood on still clearly visible. The trees were cut high to avoid their basal hollows. A two-man crosscut saw was used. It was a hard and dangerous job.

The mechanised practices of post-World War 2 saw a very different type of forest develop. The coups were clear felled. Anything that was not a saw log was bulldozed into rows and burnt. The churned-up coup would then be seeded (often from the air). The resulting forest was a monoculture of ash trees which were harvested on a 60-70-year cycle. Without the hollows of mature trees and a depleted understory, these forests are largely devoid of wildlife.

There are some rare, isolated mature mountain ash trees. Some are well known, others are 'secret'. One of the better known is the Standing Giant in Mount Worth NP. Even these trees are endangered. As more people visit a tree, the soil around its base becomes compacted. At some trees a boardwalk has been built around the base of the tree to prevent this. Another danger comes from visitors bringing in fungal spores on their boots. The introduced cinnamon fungus is of particular concern. While mountain ash can survive forest fires quite well, it is expected the increased frequency of forest fires due to climate change will have a significant impact on them.

Sadly, there are several old mountain ash stumps with signage claiming that the tree was the tallest tree in the world.



Birds of a Feather

We all love birds! But while some of us enjoy watching and listening to the myriad bird species we're so fortunate to encounter around us, we may not all be expert at their identification. So we are bringing our readers a new column by a passionate bird watcher who will talk about our local birdlife and offer hints on which are visiting our local area now.

At the moment there are three species of small waders, also called shorebirds, feeding together on the mudflats of the Waranga Basin. What makes this interesting is that each one has a different life cycle and only at this time of year will the three species be feeding together. All three are about the same size, 15-18 cm long from bill to the end of tail.

The red-capped plover is really a local. It breeds at the Basin and although it moves around the district it can be seen at any time of year. In the spring and summer the birds are nesting in a scrape on the ground. The nest is hard to find as the adults try to lure you away from the nest by calling and running away, stopping, then calling again asking you to follow them.



Red-capped plover

The red-necked stint migrates to Siberia and Alaska to breed. The stints are just about to leave on the long journey along the East Asia/Australasia Flyway together with a number of other species of waders after spending the summer in Australia. That's a long way to fly for a bird



Red-necked stint

weighing about 30- 40 grams and only 15 cm long! After breeding the adults return to Australia for our summer and leave their young to find their own way down here a few weeks later. Somehow the immature young know how to find the way back to Australia and the Waranga Basin without any help from their parents. At the moment the stints are changing the colour of their necks to a rusty orange so that they will be in full breeding plumage when they arrive in Siberia.



Double-banded plover

The third species on the mudflats is the double-banded plover which has only just arrived from New Zealand. This plover breeds in New Zealand in the spring and summer. Many of the birds stay all year round in New Zealand, however the birds which nest in the alpine regions fly across the Tasman

spend the winter in Australia before returning in the spring. This east-west migration is quite unusual as nearly all waders migrate on a north -south axis.

What does the red-capped plover think of all this when it is feeding with the other two? Why go to Siberia to breed or why fly the Tasman for a winter holiday? Each species has a niche which works for it - and it's a pleasure to watch them feed together for this one month of the year. Let's hope that the three species can meet up again next April.

The Rushy Birder

"In nature, nothing exists alone."
- Rachel Carson

Fifty years ago in our district....

Looking through the pages of past 'Rushworth Chronicles'
.....compiled by former district resident Alan McLean



Tragedy and heroism at Basin outlet

Two teenage girls spent a terrifying night in chest-deep water beneath the Waranga channel outlet regulator, after a car in which they were passengers plunged through road railings, then down the steep bank into the water. The male driver and one female passenger were drowned. All were from Shepparton.

Heading out just before dawn to shoot ducks, Ron Wootton spotted the damage, saw the stranded girls and rushed to get a rope, his brother Alan and his father Doug. The girls were dragged to the bank, where Ron's mother Olive had blankets waiting. Though a non-swimmer, Ron was the hero for his quick thinking and action as the girls had been in the water for around six hours.

Shire of Waranga

The threat of staff redundancies loomed for Shire outdoor staff, unless more government grants could be secured to complete works projects, some of which were repairs following flood damage. (Grant money for flood repairs was later announced, an overall total of just \$220,000 provided.)

Mr Tom Simpson received an Award of Merit from Shire president Cr. Bill Jacobson. Tom had been active on Shire staff for 24 years.

Court House

Court proceedings were disrupted when Sergeant Geoff Durston's corgi dog rushed through the Court House several times before being arrested by Constable Peter Hromenko.

Schools

Grades 5 and 6 at Rushworth Primary School were studying old coins, especially a collection belonging to Lisa Crosbie's mother. Her album of pennies had just 10 years missing, including the elusive and rare 1930 penny. Claire Meagher had brought along a coin dated 1860.

Preps and other grades were entertained when teacher Mr Bianco brought a real live bat to school, reported by David Coyle of grade 4.

Community

Slides were popular with Colbo Young Farmers, as Trevor Cheatley showed pictures from a trip to New Zealand. Graham Jonsson, a young visitor from Cairns, showed more slides at the home of young farmer Ken McMurtrie. Ian Laurie had extended home hospitality to the visitor.

Parents (and some brothers) of some Rushworth Guides travelled around the town

to collect old newspapers left by arrangement outside homes. The papers were sold to a recycling company to raise funds for the Guides and Brownies.

Tenders were called to run the 5-days-per-week mail run Rushworth – Wanalta - Moora.

Personal

Moving down the aisle of St Lawrence's Catholic Church at Stanhope were Michael and Noela Barlow, who minutes before had been Noela Flanagan. (*Congratulations: Golden wedding anniversary.*)

Peter Hammond of Murchison married Margaret Fleming in her home town of Mildura, with his brother Ian being best man.

Julie Walshe of Rushworth married Gary McKendry of Highett at St Paul's, and followed up with a reception in the Shire Hall.

A daughter Vicky joined Carol and John Greenaway of Stanhope South, and Gary and Jan Simpson welcomed Martin or Dustin (*the Chronicle printing was blurred!*)

Graham McIntosh of Rushworth and Rosemary Hctor of Junortoun announced their engagement.

Jenny Polkinghorne's parents Don and Gloria arranged a barbecue and smorgasboard at Murchison to celebrate her 21st birthday.

Victor Cruz (snr.) died at Rushworth, aged 77. He had played music for dances in the Shire Hall and elsewhere for decades.

Tennis

Rushworth A-grade tennis team number 1 lost the final by just one game. In fading light the final mixed doubles (Bill Barlow and Alice Brown) were six-all against Toolamba's Alan Gross and Pam Pogue when play was abandoned, as Rushworth could no longer overtake the Toolamba score.

Other sport

First home in the pigeon race from Numurkah was Craig Beck, or rather his pigeon, which had clocked 790 yards per minute. He just beat the Barbers, Raymond and Wendy's bird finishing second, ahead of Dianne and Susan's pigeon, then Arthur and Gloria's warbler. The latter were the Barber parents.

Rushworth Golf Associates teed up and off for the 1975 season, Jean Jessup taking the C-grade event and Ann Anderson the winner of B-grade. Marj Johnston was nearest the pin.

Murchison footballers had match practice success over Lancaster with young Ron Burls named as best with R. Hammond, S. Roberts, R. Sloper, G. Brown, G. Wall, L. Pinner and D. Dixon. Murch Seconds won easily.

Rushworth welcomed Nagambie for

a practice match, with the visitors on top. David Roberts and Mark Mackinder were mentioned. Not in the yellow and black were Ross Williams on a one-day permit with Stanhope, John Lambden and David Perry on the same arrangement with Tatura. Glenn Heily and Herb Barlow attended Mick Barlow's wedding while Bill Barlow was busy losing the tennis final.


Appointments for the season were announced with Raymond Lloyd head trainer, Thirds timekeepers Geoff Beck and Herb Barlow (snr.), for the Seconds Alf Raglus and Doug Poulson, with Duncan McLean and Cec Bradley sharing that task for the Seniors. Noel Merryfull, backed by Herb Barlow (snr.) had scoreboard responsibilities (*but Donald Clarke must have been warming up*). In white around the boundary with whistles were Graeme Hageman (Seniors) and Simon Harrop (Seconds).

Lighting the fire to heat the showers were George "Bluey" Potter and Jim "Hooks" McArdle.

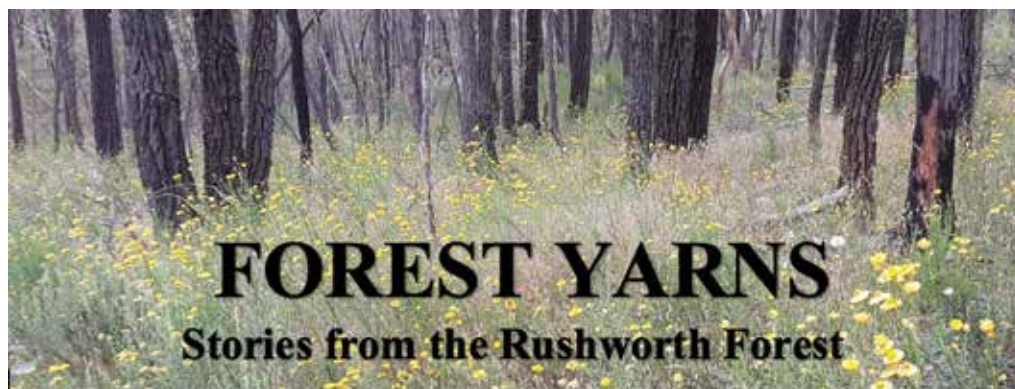
David Farrer was cleared to Lavington, Roger Barnes to Warracknabeal, Bob Hurley to Alexandra and W. Francis to Clunes. Declined clearances were John Schneider (Blackburn), Geoff Wall (Murchison), Ron McGuire (Goorambat) and Ian Robbins (Lavington). They were still required players.

Colbo footballer Stuart Hill broke a bone in his ankle in a practice match. On crutches for several weeks and able to do little work, the club supported the young farmer by accepting donations.

Rushing to Whroo,
1853 to 1880



\$25
Alan McLean
0412 143 660
Books available:
Waranga News office and General Store Rushworth



It is hard to understate the amount of timber that was used for firewood in the early days, before people had access to electricity and gas. Almost every house had a wood stove in the kitchen, as well as fireplaces in other parts of the house. Many workplaces required timber for boilers, traction engines and a host of other types of steam-powered equipment.

Early in 1904, the *McIvor Times* provided an estimate of the amount of firewood used in Bendigo in the previous year - 1903. The overall total was astonishing - just under 420,000 tons. Much of this (46%) was used for domestic and hotel purposes, while (38%) was used to provide fuel for the mining industry. The balance was used in other industries, such as the pyrites works, the electric company, potteries, foundries, breweries, brick kilns and flour mills.¹

Rail transport

While the use of firewood in the Waranga area was much less than this, it still represented a large amount of wood coming out of the Rushworth forest. However, what really made the supply of firewood a major industry for the local area was the completion of the railway line to Rushworth in 1890, with the later extension to Colbinabbin and Girgarre in the early 20th century. This meant firewood could be transported easily to try to satisfy the insatiable demand for firewood in Melbourne.

In the southern part of the Rushworth-Heathcote forest, private railways were established by a company to get timber from the forest down to the stations at Tooborac and Heathcote, from where it could be further processed and sent north to Bendigo or south to Melbourne. The *McIvor Timber and Firewood Co* played a major role in this large-scale industry.

It is unclear why this sort of infrastructure was not developed in the northern part of the forest. Instead, timber was transported into Rushworth station by horse drawn vehicles, and later traction engines and trucks. The businesses operating on the Rushworth end of the forest were small scale: there was nothing comparable in size to the *McIvor Timber and Firewood Co* to the south.

Railway siding

Because the firewood industry was so important to Rushworth, in 1899 a siding was approved at the station to facilitate the establishment of more sawmills.² Prior to that, there had only been one or two mills at the station until 1898, when Peter Venturini

set up alongside the existing mills of Henry Campbell and William Skate.³

The number of mills at Rushworth station varied from time to time, with most sources quoting between five and seven after the turn of the century. During the five years from 1900-1904, the following millers paid rates at various times to the Railway Department - Skate, Campbell and Venturini, as already mentioned above, and William Bockholt, Alexander McRobert, P P Casey, E W Curtis and Henry Ferris.³ In 1902, the Bendigo Advertiser reported that there were six woodmills at the station, each employing 5-6 hands.⁴ With plenty of people working out in the forest to supply the mills as well, it is clear how important the industry was to the town economically.

Along the tracks

As well as the sawmills at Rushworth station, mills were set up at other stations along the line. Most notably, the Hammond Bros ran their business through Waranga station and Hammond's Siding, and the Curtis' mill operated for many years at Erwen station (the area now known as Moora). There will be more details on some of these mills in later stories.

In 1929, the *Weekly Times* reported that "the firewood trade provides employment for a number of men in the Colbinabbin district, and two plants are operating at the station. Cornella is the source of supply, there being large areas of grey box in that locality."⁵ At the time, land in the area was being cleared to make way for farming. It was common practice to ringbark trees across large areas to be used for cropping and grazing. At the time, there was little understanding of the long-term environmental effects of the clearing.

References: 1 McIvor Times 14/4/1904; 2 Victorian Heritage inventory no H7924-0100; 3 With thanks to Samantha Cerchi, summary from Waranga rate books 1891-1904; 4 Bendigo Advertiser 22/2/1902; 5 Weekly Times 9/2/1929

Forest nature note

We usually think of wattles flowering in springtime, but one of the local wattles is flowering now. It is the spreading wattle (*Acacia genistifolia*), which has creamy coloured flowers. It may be flowering a little earlier than usual this year because of the dry conditions. The shrub is very prickly. In gardens it can grow to three metres but in the Rushworth forest it is generally smaller than that. It can flower right through to October.

A Name from the Past

Alfred Pocknee Rushworth tailor - left five young children

The name Pocknee is no longer found around Rushworth and Stanhope, though married descendants may have other surnames. Alfred Pocknee, a local tailor just 33 years, was reported to have died in the *Rushworth Chronicle* of 25 May, 102 years ago.

"POCKNEE - On 24th May, 1923, Alfred Edward, second son of Mr and Mrs H. Pocknee, Warburton, late of Rushworth, in his 33th year, and loving husband and father of Marjorie, Harry, Gwendoline, Lindsay and Eric."

"The residents of Rushworth received a painful shock yesterday, when it was learned that Mr A. E. Pocknee, the well-known and popular business man of this town had died at Mooroopna Hospital.

As it was not generally known that the late Mr Pocknee was seriously ill, the news of his death was all the more painful. Although he was not feeling in the best of health lately, Mr Pocknee attended to his tailoring business until about a week ago, when he was compelled to lay up.

As he gradually grew worse, on the advice of his medical attendant, he was taken to the Mooroopna Hospital on Monday last. No hope was, however, held out for his recovery, and he passed away in his sleep at 4 o'clock on Thursday morning.

The late Mr Pocknee was the second eldest son of Mr. H. Pocknee, who carried on his well-known tailoring business in Rushworth for many years, the late Mr Pocknee succeeding his father's business about ten years ago.

He was born in Rushworth, and by his genial manner was very popular with everyone. He took a great interest in all kinds of sport, and his death was generally regretted, the sympathies of the residents of the town and surrounding district going out to his sorrowing relatives.

The deceased married a daughter of Mr. J. Perry, of Bailieston, the well-known noxious weeds inspector for the Shire of Waranga.

He was 32 years of age at the time of his death, and leaves his wife and five young children, two boys and three girls, the eldest being about eight years of age, to mourn their untimely loss.

The remains will be brought from Mooroopna and interred in the Rushworth cemetery, the funeral taking place on Saturday afternoon."

Alan McLean

NEWS FROM THE OP-SHOP AND FOODBANK

BROUGHT TO YOU BY RUSHWORTH COMMUNITY SUPPORT INC.

Changing of the seasons

Another Easter Festival in the next couple of days and it should be some wonderful weather. Forecast 21-22 degrees, which is just right for strolling around a large market and watching the parade. I do hope you all got a chance to pop into the Op Shop while the 3rd birthday sale was on and managed to snap up some bargains. After the Easter weekend volunteers will be moving summer stock off the racks and beginning to put out our winter stock. This may take a week or two so keep searching for new winter clothes.

Esther has informed me we have a large consignment of size 6 and 8 women's clothes, which has just arrived so if you or daughter or friend are that size you are very lucky. That size would fit around one of my legs!

The Little Green Shed has some interesting news at the moment. Firstly, many thanks to Goulburn Valley Water who have connected a tap just outside the gate so the plants can now be easily watered. Also there are two sofas which have come in at \$50 each (*Hugh in photo checking out how comfortable they are*) and if you are refurbishing an old house there are some old solid wood doors at \$100 each. You can't get those at Bunnings! Also at the shed is the lovely BBQ unit for \$100, a great opportunity for scrumptious BBQs in glorious autumn weather. Although I must admit it would be nice if, as in previous years, we get rain after Easter.

Children's clothes are now back to \$5 for a bag. And just this morning a bag of children's' dress up clothes came in with some wonderful costumes. Bright pink tutus, dramatic cloaks and princess dresses, such a great way to keep the kids entertained over the holidays.



Foodbank opening Hours over Easter weekend

The Pantry outside the door of the Foodbank will be stocked with non-perishable food. If anyone wants to add to its contents that would be really good. Many people are struggling to feed themselves and their families at present. Good Friday CLOSED. Easter Monday 10am-12

To finish off with a laugh – I couldn't start my car when parked in the High Street the other day. After bashing the battery terminals with a hammer, swearing and generally stamping my feet I called RACV roadside assist. A lovely young man arrived half an hour later only to inform me I had left the car in gear!!!! He did say it was a nice day for a drive to Rushworth.

Have a lovely Easter, drive safely and enjoy all the chocolate.

Heather Wellington

OP Shop bargains waiting to be snapped up: (left) BBQ in top condition (right) quilted wall-hanging.



Easter Opening Hours Op Shop

Good Friday CLOSED
Easter Saturday 9am – 12
Easter Sunday 9am – 12
Easter Monday 9am – 2pm

Foodbank

Good Friday CLOSED
Easter Monday 10am-12

Easter Festival time is here

When people wear their rabbit ears
And funny hats and bobbing tails
And kids put chocolate in their pails.
A market large with lots of stalls
With belts and books and buns and balls.
You see your friends and stop to chat
"Hey, how are you? I love your hat!"
The children run in circles dizzy
Stall holders smile and keep busy.
Find baby animals and local art
Or take your dog down to take part
In funny games and competitions.
Waranga News' next edition
Captures all the action and fun
Such great photos to be won.
Especially with the big Parade
What wonderful memories to be made
The horses, carts and vintage cars,
The trucks, the traps have travelled far.
Rushworth shows our best side yet
With wonderful people to be met.
A friendly, laughing, helpful crowd –
Rushworth people do us proud.

Heather





Colbo Tit Bits

Proudly Sponsored by

REID
Stockfeeds

Trusted Performance

ANZAC Day in Colbinabbin

Colbinabbin’s ANZAC Day service will be held at the Colbinabbin Memorial Hall on Friday 25 April at 9am. There will be guest speakers and the Colbo Pub Choir will sing. A plate of morning tea to share would be appreciated.

Guest speaker

Cornella Care will host Guest Speaker Annabelle Cleeland MP at the Colbinabbin Country Hotel on Wednesday 23 April at 2pm. Afternoon tea will be provided. There will be a trading table. All welcome.

Colbo’s new public loos open

The new public toilets between the Colbo hall and the silo art area are now open for business (if you’ll pardon the pun).

The toilets at the hall will now undergo some restoration and upgrading.

EASTER SERVICES

Anglican

There will be no services at St John’s Colbinabbin over Easter. All Easter services at St Peter’s, Elmore

- Maundy Thursday 7pm
- Good Friday 10am
- Easter Day 10am

Uniting Church (all four churches open for the morning services)

- Maundy Thursday 7pm
- Good Friday 9.30am (Zoomed)
- Easter Day 9.30am (Zoomed) - host church Colbinabbin

Catholic

- Maundy Thursday 6.30pm Rushworth followed by Seder Meal at Parish House
- Good Friday (10am Stations at Cornella)
- Easter Vigil 7pm St Mary’s, Rushworth
- Easter Sunday 9am, Cornella (with cuppa and hot cross buns after Mass)

Colbo Diary

Coffee and Cake - 1st & 3rd Tuesdays 10.15am @CCH
Colbo Community Shed - Thursdays BYO BBQ lunch
Colbo Pub Choir - 5pm Tuesdays at CCH
New Parents’ Group - 9am 1st & 3rd Thursdays @ CCH

APRIL

- Wed 23 Annabelle Cleeland 2pm @CCH
- Fri 25 ANZAC Day 9am service @ hall

MAY

- Thurs 1 The Suburban Footballer
- Sat 3 LBU Men’s Mental Health Night
- Sat 17 CFNC Family Night
- Sat 24 CFNC Annual Ball

FIRE BRIGADE ROSTER

- April 20 Peter Morgan, Trevor Brown
 - April 27 Robert Brown, Sam Brown
- If unable to attend for duty, call Chris/Leo.

Siren, radio and test pager at 9am. Crew member should ensure the siren and radio tests are carried out. Vehicles should be checked for fuel and taken for a road test.

Beer on tap CCH Happy 21st birthday



Carlton Draught still remains the most popular beer on tap at the Colbinabbin Country Hotel, but hot on its heels is the locally made XPA ‘Haybale’ which has become very popular over the last couple of years. Both locals and visitors have acquired a taste for the brew, so much so that a new sign has been installed on the west side of the building. Cornella Brewery is where this delicious drop is made!



It was an excuse to get together to help Sam Ryan celebrate his 21st birthday. (L-R) The birthday boy, Sam, Dad Bernie, sister Mardi and brother Jude.

Any news for the News?

Let Shell or Natalie know or go straight to the top and tell Vicki at the News office. 5856 1311

Autumn Fest and weather drew the crowds



Lily, Demi, Hannah and Zena.



Cooper and Annette Hamilton.



Gabby, Meg and Prue.



Tait, Ray and Mark.

ROUND 2	ANZAC WEEKEND	ROUND 3
26 APRIL		3 MAY
Heathcote v Colbinabbin		LBU v Colbinabbin
LBU v Mount Pleasant		Mount Pleasant v Leitch-Gun
Leitch-Gun v Huntly (L)		Huntly v Elmore
Elmore v White Hills (N)		White Hills v North Bendigo
BYE - North Bendigo		BYE - Heathcote

Cemetery Trust

Mowing Roster (lawn section only)
April - Ray McEvoy
May - Emily McFadzean

Around our towns Around our towns Around our towns Around our towns Around our towns

Stanhope Market brings visitors to town

The Stanhope Community Market on Sunday 6 April was well attended bring many visitors to the town to view the variety of stalls on offer.

The committee is very pleased that the new date and format of the market is making the event such a success.

“Thank you to all our stall holders,” said Stanhope Community Market committee member Glenda Cowie.

“Without you the market would not have been such a success.”

Patrons enjoyed music from Alia and a barbecue cooked by locals.

All proceeds go to the organisation of the Stanhope Festival event in October.

At Sunday’s community market there was a great range of stalls, including garage sale items, moccasins, preserves, wooden chopping boards, plants, arts and crafts and much more.

Wonderful refreshments were enjoyed from Upside Down Coffee On The Go and Stanhope’s local cafe, while the Op Shop was also open for visitors to browse.

There has been some great feedback, all reporting an enjoyable day.

The Stanhope Community Market is on the first Sunday of each month in Birdwood Ave, Stanhope from 8am till 1pm.

For more details contact Glenda Cowie on 0438572452.



Stalls displaying a wide variety of goods for sale lined the main street of Stanhope.

ANZAC Day 2025 in Corop

A Service will be held on ANZAC Day, Friday 25 April at 9.30 am at the Corop Community Centre Memorial Stone.

Wreaths will be laid by representatives of Local Government, Community and Service groups, and there will be an opportunity for anyone to lay a wreath, flowers, or other commemorative object at the Memorial Stone during the service.

If you have medals, either your own, or those of a family member who you wish to honour, please wear them.

Library Program at Stanhope



Nine children enjoyed an activity with Linda from the Campaspe library recently. They created a box pot in which they planted succulents and then decorated the top of the soil with coloured rocks and little mini toadstools. The children were very pleased with their creations. It was a great activity and hopefully may inspire some to become gardeners. Thanks Linda for a fun morning.

HairZone

8 Birdwood Avenue, Stanhope

Ladies’& Men’s Hairdressing

- Fashion Cuts, Colour and Foils
- Perming • Long Hair Styling
- Eyelash and Brow Tinting
- Long Hair Styling for Special Occasions
- Facial Waxing

Opening
Tuesday to Friday
(late Thursday nights)

Phone Melinda
for an appointment
5857 2264

MAT LANGLEY ELECTRICAL & REFRIGERATION

PTY LTD

Ph: (03) 5824 2317

Clean Edge

cleaning ~ gardening ~ maintenance

Inside and out
we’ve got you
covered

Benn 0493 601 877
Lucy 0411 898 364
cleanedge33@gmail.com

Day’s Mill at Murchison South opening to visit

Day’s Mill and Farm complex is a mostly intact example of a 1880’s steam-driven flour mill and farmstead, but it is also so much more.

It was inhabited by the Day family from 1868 to 1986 when it was purchased by the Historic Buildings Council and is now managed by Parks Victoria. Days Mill is classified by the National Trust and listed on the Victorian Heritage Register.

This gorgeous farmstead and steam-powered flour mill were once the centre of their own mill town with at least ten weatherboard cottages in the paddocks surrounding, now sadly lost to time and farming. This town was complete with school and festive picnics. Balls were held in the downstairs section of the mill. The family would loan their piano to the local churches on request.

The Day’s Mill site was once a hive of activity with a three storey flour mill, general store, a 200 head dairy herd, nine chicken coops, a butcher’s shop, a piggery, sheep and bees with both heavy and light horse training and a cropping business - just to skim through some of the industry the Day family pursued in their time on the site.

This wonderful place is made all the more special when you discover that William and Ann only ran it together for two years before William met his demise. Ann was left to run the property with nine children at heel which she did very successfully until the age of 70, when she enjoyed her retirement before



The heritage listed Days Mill and Farm complex.

passing at the ripe age of 76.

This is just a small thread of the stories and industry that went on at the farmstead. The informed tour guides can tell you much more on Mother’s Day when the site will be bustling with life again.

A very special open day

On Mother’s Day, Sunday 11 May from 10am to 4pm you can visit this remarkable place. Entry is free and vendors will have coffee and snacks available, or bring your own picnic. There will be other stalls you can browse and Murchison & District Historical Society will be there with history

information, books and merchandise. There is plenty of parking. The address is 5 Day Road, Murchison South. If coming from the south, you will need to travel via Murchison as Kirwan’s Bridge is closed – there will be signs in the main street of Murchison to direct you.

For more information call Parks Victoria on 13 19 63.

*Talayah Brown,
Kay Ball,
Murchison Historical Society*



Renovated gate house.



Day’s Flour Mill.



The Mill House.

Restrictions, penalties, still in force for parts of Victoria

Ahead of the Easter break, CFA is reminding Victorians that restrictions, penalties, still in force for parts of Victoria

Ahead of the Easter break, CFA is reminding Victorians that fire restrictions are still in place across many parts of the state, and burning activities should still be put on hold in these areas.

The Fire Danger Period (FDP) is a

designated time in each Victorian municipality when fire restrictions apply due to increased fire risk. During this period, a written permit is required to burn off for farming practices, including grass, undergrowth, weeds or other vegetation.

While some municipalities have now exited the FDP, many areas remain under restrictions due to dry autumnal conditions

and unpredictable fire behaviour.

CFA Chief Officer Jason Heffernan said this was made evident on the weekend when CFA was called in to support the efforts of Forest Fire Management Victoria, after a planned burn jumped containment lines southwest of Daylesford, leading to a Watch and Act warning and potential impact on private properties.

Around our schools Around our schools Around our schools Around our schools Around our

St Mary's students enjoy busy end of term

St Mary's own cross country day

We had a fabulous day for our St Mary's School Cross Country. We are very proud of each student who ran and to those who cheered their best for their peers. Thanks to all of the helpers and staff for the organisation and the children for their encouragement and determination!



(Above) Foundation winners.
(Below) Grade 3 winners.



(Above) Grade 1 winners.
(Below) Grade 4 winners.



(Above) Grade 2 winners.
(Below) Grade 5 winners.



Project Compassion Coin Trail Fundraiser

Following our successful School Cross Country, we held the Grade 5/6 Project Compassion fundraiser. Using an array of coins, we created the word "Caritas", a large

letter C and a helping hand. Our fundraising efforts from our Coin Trail made \$101.80 for Caritas and Project Compassion. Thanks to everyone for your support!

Grade 5/6 Market Stall Afternoon



Taya with her market stall.



Mason, Sophie and Mia with their stalls.



On the last Thursday of Term 1, the Grade 5/6 students ran a Market Stall afternoon. Over the term, they have studies Business and Economics, and this culminated in running a stall for staff, students and families. It was such a fun afternoon filled with lots of laughing, sugar and fun! Thanks to everyone who came along and supported the students!

Catholic education in Sandhurst

Catholic Education Sandhurst is spreading the word to celebrate Catholic education in the Sandhurst Diocese, featuring a series of images and taglines for schools to use in their promotions.

You might recognise some familiar faces on our website, Facebook page, and through other school promotional materials, as we share the good news of Catholic education within our school and the wider Sandhurst diocese.

Students and parents are encouraged to share our achievements and updates, helping to spread the word and celebrate our school's success.

This includes sharing our social media posts and highlighting key events such as Open Classrooms, School Tours, Catholic Education Week, and our Transition Program.

By sharing our school with others, you help highlight the joy and inclusivity of Catholic education—a place where creativity thrives, connections grow, friendships flourish, purpose is found, teamwork is valued, and achievements are celebrated.

Katherine Jamieson

Around our schools Around our schools Around our schools Around our schools Around our

Colbo Primary raise funds for RCH Appeal

On the last day of term the grade 5/6 students at Colbinabbin Primary enjoyed 'Pyjama Day'. A gold coin donation granted them the fun of wearing their PJs to school. The money the students raised is going to the Royal Childrens Hospital Appeal - not sure how much they raised, but it's going to a very worthy cause.

In sleepwear but wide awake: (right) Grades F/1, (below left) Grade 4, (below right) Grades 2/3, (bottom) Grades 5/6.



Back to school

It's almost back-to-school time and Term 2 will take us into winter 'cough-and-cold' territory. With current predictions of a bad 'flu' year it's best to be on the alert and ready for battle with those pesky germs. Some healthy info for parents is available on the **healthdirect** website including:

Most coughs and colds in children are caused by viral infections.

Cold viruses are spread easily through droplets from the nose and mouth of infected people.

Cold viruses can cause a runny nose, sore throat, cough and tiredness.

The best treatment for a cold virus is to rest at home so your child's immune system can fight the virus.

Cough syrups and cold medicines are not recommended for children.

For more insights go to : <https://www.healthdirect.gov.au/coughs-and-colds-in-children>

Keep an eye out for slavery-free Easter eggs

Keep watch for the certifications when you're buying those last minute Easter eggs.

ACRATH (Australian Catholic Religious Against Trafficking in Humans) is an Australian registered charity that works to eliminate human trafficking and modern slavery. Look out for ACRATH and the Fairtrade and Rainforest Alliance certifications on chocolate packaging when buying your Easter eggs this year.



Why rabbits and eggs?

Do you ever wonder why there's an Easter Bunny and Easter eggs?

Well . . . both eggs and rabbits are symbolic of fertility and new life which align with the themes of re-birth associated with the Christian festival of Easter.

Taking the symbol another step further, the egg's shell represents the tomb from which Jesus rose, symbolising resurrection and new life.

But the Easter Bunny tradition, particularly the association with eggs, has roots in ancient pagan festivals celebrating spring and the goddess of fertility, Eostre.

Whatever the reasons, it's time to break open another chocolate egg!

Three babies baptised at Cornella



On Sunday 6 April 2025, three babies were welcomed into the faith community at Cornella. (L-R) baby Greta with her father, Hugh and mother, Prue Barlow; babies Daly and Hattie Tuohy with their mother, Sally and father, Pat. Fr Jinjo Solis was the celebrating priest. The congregation joined the families and friends for a cuppa after Mass.



District Church Times and Contacts

Anglican

- St Paul's, Rushworth: 0419 512 632
 - 9.30am 2nd Sunday of month - Communion
 - 9.30am 4th Sunday of month - Lay led service
- Christ Church, Murchison: Rev Richard Pennington: 0405879554
 - 11am service every Sunday
- St Matthews, Stanhope: 0419 855 964 (Church Warden)
- St John's, Colbinabbin: 0428 329 344 (Mick Clayton)

Shine Church, Stanhope

Sunday services at 10am at the Stanhope Community Hall. Kids church running as well during service. More info call Wal Sinapius 0408 393 398.

Catholic

St Mary's Parish. 1st and 3rd Sundays: Cornella 9am; Stanhope 10.30am. 2nd and 4th Sundays: Rushworth 9am; Murchison 10.30am. 5th Sunday: One Parish Mass - Rushworth. Contact a team member on the parish mobile phone: 0459 898 925. Sunday Mass continues online from St Kilian's Sundays 10am.

Presbyterian

- St Andrew's, Rushworth: Sunday 9am: Minister Kalpan Vasa 0477 241 042 or Elder Gary Dunstan 5856 1332.
- St Andrew's, Stanhope: 5831 6494 (Rev Kyung Rae Ee)

Generations Church, Tatura

5824 3240 (Pastor Jeremy Burr)

Salvation Army: 5852 3875

Uniting Church

Waranga Uniting Churches – Rushworth, Colbinabbin, Murchison and Tatura. Service Times: Weekly at 9.30am (with the 'room' open for a chat at 9am)

Every congregation is open for services which will be streamed each week into all four of our church buildings.

Each week one congregation will host the service with people in other congregations participating in leading the readings, sharing news and fellowship via the magic of Zoom.

You are welcome to join us in person or from your lounge room via Zoom.

The link for the Zoom service can be found on our website warangaunitingchurches.net.au or can be emailed to you each week.

A MORNING PRAYER FOR CHILDREN



Good morning, God, this day is new,
The sun is bright, the sky is blue.

Thank you for this day ahead,
For family, friends, and daily bread. Amen.

CLIVE COVENTRY FUNERALS

Providing an individual funeral to celebrate life's journey

Servicing Colbinabbin, Murchison, Rushworth, Stanhope, Tatura & district

Reasonably priced funerals to suit all budgets

5852 1619

Locally owned and operated

5831 3922

92 Allan Street, Kyabram

113 Corio St, Shepparton

living the

GOOD LIFE

When reality doesn't match the script

I've come to realise something about myself. I'm not usually most upset when things go wrong - I'm most upset when things don't go as I expect them to.

What eventuates might be fine, even manageable, but when I've built up a picture in my mind of how something will go, how someone will respond, how a day will unfold and that picture doesn't become reality, I'm thrown deeply. It takes me time to adjust. Often the problem isn't my reality. It's my expectations.

We've all had those moments when what we planned, hoped for, or counted on didn't work out the way we expected. It might have been the promising harvest that fell short despite the early rain, the family event that turned tense instead of joyful, or the health diagnosis that interrupted everything we had happening in our life. In these moments, we often say things like, "I just didn't expect this."

Walking into the Easter Story

And so, each year I find myself walking into the Easter story with a little more empathy, not just for Jesus, but for the people around him. Nearly every figure in the story is struggling to come to terms with disappointment and disorientation.

The cheering crowd on Palm Sunday expects a powerful king riding on a majestic horse, many hands high, as he enters Jerusalem to overthrow the Roman Empire.

Jesus rides into Jerusalem on a small donkey.

The disciples expect a Passover meal full of celebration. Jesus gets up from the table, ties a towel around his waist, washes their feet, and speaks of betrayal.

The crowds expect a revolution. They expect Jesus to call down angels, to fight, to win.

Instead, Jesus is arrested, mocked and executed.

They didn't expect that the end of the story would come so soon.

And they certainly didn't expect that Jesus' tomb would be empty.

One of the most honest and comforting truths of the Easter story is this: God doesn't always meet our expectations — but God often exceeds them. Not with easy fixes or grand displays but with surprising grace,

unexpected strength, and love that keeps showing up.

Starving in a land of provision

It reminds me of the story of explorers, Burke and Wills, and their tragic end during one of Australia's most well-known expeditions. After trekking from Melbourne to the Gulf of Carpentaria, they returned to Cooper Creek, weak and malnourished as their supplies ran out. But the real tragedy was this: they were surrounded by food and didn't know it.

The local Yandruwandha people had lived for generations off that land. They knew how to harvest bush tucker - native yams, seeds, and nardoo, a kind of water fern. But Burke and Wills didn't recognise these things as food. They saw the plants, but they didn't see nourishment. They later tried eating the nardoo, but without proper preparation it became toxic. In the end, they starved to death in a landscape full of provision.

YOU WON'T SEE IT FOR
WHAT IT IS, UNTIL YOU
STOP LOOKING THROUGH
THE LENS OF WHAT YOU
WANT IT TO BE.

This story stays with me. It reminds me that sometimes what we most need is right in front of us but we miss it because it doesn't appear in a form we recognise. We're looking for something bold and obvious. and God comes in the quiet, the unexpected, the strange. Like bush food to a settler's palate. Like resurrection in the midst of grief.

A new world breaking in

The resurrection of Jesus wasn't a grand finish to a carefully laid plan. It was a surprise. An interruption. A complete re-framing of everything the disciples thought they knew. In their grief, they couldn't yet imagine a new beginning — and yet that's exactly what God was offering.

Jesus' resurrection is a reminder that even when life takes a turn we don't see coming, even when we feel like we're stuck in Easter Saturday silence, resurrection is still possible.

Easter is a paradigm shift

It's not about Jesus simply coming back to life.

It's about a new world breaking in — a world where death no longer has the final say, where compassion triumphs over control, and where wounds are not erased, but transformed.

And this speaks to me too, because, as I said earlier, I often don't cope well when things don't go to plan. I like to think I'm adaptable, but the truth is that I often need time to let go of what I thought was going to happen — time to see what might be possible instead.

Resurrection in the unlikely places

The Easter story reminds me that God rarely shows up the way we expect but time and again, God shows up anyway — in quiet acts of service, in broken bread and poured wine, in grief and in hope, in silence and surprise. And often, what God offers is not what we hoped for — but more than we imagined.

This Easter I want to be open to God surprising us with far more than we hope for or can imagine. I invite you to be open to having your expectations undone. I would love all of us to be open to the idea that disappointment might give way to wonder. That confusion might open the door to deeper trust. I want us to be open to the possibility that love might show up in a way we didn't anticipate, but that we desperately need.

Not what we expected

But maybe, just what we needed.

This is the gospel, and it's good news.

Brian Spencer, Minister,
Waranga Uniting Churches

EASTER SERVICES

Waranga Uniting Churches

- 7.00pm April 17 Maundy Thursday
Not the Meal They Expected
- 9.30am April 18 Good Friday
Not the Ending They Expected
- 9.30am April 20 Easter Day
More Than We Could Ask or Imagine

Anglican, Christ Church Murchison

- Maundy Thursday 17 April 10.30am
- Good Friday 18 April 11am
- Easter Sunday 20 April 11am

Catholic

- Maundy Thursday 6.30pm Rushworth followed by Seder Meal at Parish House
- Good Friday 10am Stations @ Cornella
- Easter Vigil 7pm St Mary's, Rushworth
- Easter Sunday 9am, Cornella (with cuppa and hot cross buns after Mass)

VALLEY FUNERALS

'The caring people'

Tatura and G.V. Areas

5824 1180

Locally Owned
Affordable Funerals

Kyabram & District Funeral Services

Serving our Community - Contact Colin and Susan Moody

Serving Rushworth, Stanhope, Girgarre, Colbinabbin, Corop, Toolleen, Murchison
Nagambie and Tatura.

Elva Moody is our Rushworth Representative

Phone: 0428 859 593

119 Albion Street, Kyabram 3620

Phone: 5852 1061 Mobile: 0409 935 375

WARANGA NEWS CLASSIFIEDS

PUBLIC NOTICE



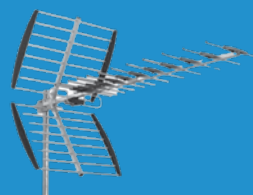
Temporary Road Closure of Meade Lane and Johnson Street, Colbinabbin

Prendergast Earthmoving has been engaged by Campaspe Shire Council to deliver a road infrastructure improvement project in Colbinabbin. The scheduled work will include the Reconstruction of Johnson Street and regrading of 140 Lm of open drain along Meade lane.

The project is set to commence on the 29th of April, weather permitting, and is expected to be completed on the 30th of May. During this period, Meade and Johnson Roads will be closed to through traffic, and a Detour will be in place.

If you have any further inquiries regarding the project, please feel free to contact us at 03 5422 2430 or via email at info@prendergast.com.au.

Alternatively, you can contact Campaspe Shire Council on 1300 666 535.



0408 597 938

COVERING ALL OF YOUR PLUMBING NEEDS
FOR HOME AND BUSINESS. SPECIALISING
IN MAINTENANCE AND IMPROVEMENTS.

LEAKS • BLOCKAGES • RENOVATIONS
GAS FITTING • TAPS • TOILETS

**LIPSHUT
PLUMBING
& GAS FITTING**

 DAMIEN LIPSHUT

0499090924 - CALL ME TODAY

✉ DAMIEN@LIPSHUTPLUMBING.COM.AU



Solutions from last edition

R	E	L	I	A	B	L	Y		B	O	N	A
O			N		A		E		E			Y
B	I	T	E		D	E	L	I	C	A	T	E
I			P		G		L		K			A
N	E	S	T	L	E		O		O			Y
S		A		I		D	W	I	N	D	L	E
		G		K		A		T		O		
I	N	A	N	E	L	Y		C		O		A
M			E		E		R	H	Y	M	E	S
A			G		M		O		U			T
G	A	D	A	B	O	U	T		M	I	T	E
E			T		N		O		M			R
S	A	K	E		S	P	R	A	Y	C	A	N

8	2	3	9	4	5	1	7	6
4	5	7	1	3	6	2	8	9
6	9	1	8	7	2	3	5	4
2	1	5	4	6	7	8	9	3
9	6	4	5	8	3	7	2	1
3	7	8	2	1	9	6	4	5
1	4	6	7	5	8	9	3	2
7	3	2	6	9	4	5	1	8
5	8	9	3	2	1	4	6	7

**"We pride ourselves on good
old fashioned service"**



Monday to Friday 8am - 5.30pm
Saturday 8am - 12noon
Proprietor - Glenn McPherson



MURCHISON
SERVICE STATION
25 STEVENSON ST 5826 2443

Kids Trivia Answers

1. Autumn 2. The Moon (it's the first full moon on or after the spring equinox). 3. Bilby 4. Palm Sunday 5. New life 6. Chile 7. Hot Cross Buns 8. The Easter Bunny! 9. Alice in Wonderland 10. Blue

**GV
Generator
Hire**
03 5824 2299

Helen Truran
*Marriage
Celebrant*

Mobile: 0419 529 155
Phone: (03) 5826 2001

Email: hjtruran@gmail.com

Ceremonies with compassion

**Support our advertisers
who support
our community newspaper**

TRADE & SERVICES DIRECTORY



NED BARLOW
ELECTRICAL
CONTRACTING

Ned Barlow
Electrical Contracting

Domestic - Commercial - Industrial

**Servicing: Rushworth, Stanhope,
Murchison and surrounds**

Phone: 0438 348 110
(REC: 27429)

Rushworth Variety
(and Rushy Hire)

Trading hours:
Monday 10am – 3pm
Tuesday 10am – 4pm
Wednesday - Closed
Thursday 10am – 4pm
Friday 10am – 4pm
Saturday 10am – 1pm
Sunday - Closed

Phone No: 0432 491 176

www.farriervet.com

Dr. Judith Mulholland
BSc. BVMS

Phone:
58 522 000

Mobile:
0408 565 528

Email: judith@farriervet.com
P.O. Box 295, Kyabram 3619 Victoria



Rushworth & surrounds
Water Supplies

ABN 62091078695

Water Cartage from 18,000
litres to 21,000

Emergency deliveries available

Phone Shannon
0419 556 239



DAVID BRANSON
LANDSCAPE AND
GARDENING SERVICES

- Hedgecutting and mowing
- Pruning and handweeding
- Property maintenance
- Residential and commercial

Prompt and excellent service

Contact David: 0456 062 287

Peter Knobel Rushworth

Cabinet Maker

Ph/Fax 5856 1309
Mob 0419 196 164

*Kitchens – Solid Timber Furniture
Furniture Design – Bars
Handcrafted Cabinetry & Furniture
Wrought Iron Work*

SELF-SERVE

MORGAN FUEL

OPEN 24/7

Colbinabbie



Ironbark Dog
Grooming Rushworth

0425 700 806



Workmate Earthworks

Brett Petersen

0409 001 239

Email: work-mate@bigpond.com
ABN: 75056053431

Bobcat, 10t Excavator, Bulldozer,
Tandem Tipper, Mini Tipper,
Grader Attachment, Various Augers,
Trencher, Vibrating Roller & Slashing.



Jaq's Bookkeeping Services

I am a registered Bookkeeper/
BAS agent and I specialise in small
business bookkeeping.

Payables, receivables through to
all of your BAS/IAS and SRO
requirements.

Phone: 0401 186 636

**Septic Tank
Cleaning**

PROMPT SERVICE

Contact:
ANTON DAMEN
0429 843 443

High Pressure Drain Clearing

Drain Clearing, Blockages & Root Cutting

Drain CCTV Camera Inspections

Pipe Locating & Drain Repairs



0413 370 665
www.ncplumbing.com.au



NC
NORRIS CREW
WINDSCREENS



AUTO GLASS

- WINDSCREEN REPAIRS
- WINDSCREEN REPLACEMENTS ON ALL
MAKES AND MODELS
- TRUCK AND MACHINERY

LOCALLY OWNED AND OPERATED

BEN NORRIS 0429070032
JESS NORRIS 0400681290



DISTRICT INFORMATION BOARD

WHAT'S ON AROUND THE TOWNS

APRIL

Sat 19	Rushworth Easter Heritage Festival Market, High Street - 8.30am
Sun 20	Moora Working Draught Horse Muster
Fri 25	ANZAC Day services
Fri 25	Stars & Bars Festival Heathcote
Sat 26	Lockington Vintage Rally
Sat 26	Jigarre Jammin

MAY

Sun 4	Stanhope Town Garage Sale from 9am
Sun 11	Open Day at Day's Mill, 5 Day Road Murchison, free entry 10am-4pm
Sun 11	Girgarre Mothers Day Classic Fundraising walk
Sat 17	Rushworth Market, High Street - 8.30am to 1pm

Meetings & Activities - around the district

- Rushworth SES training: Wednesday evenings at 7pm
- Rushworth CFA: Tuesday nights
- Rushworth Food bank: Mon 10am -12pm, Wed 10am-12pm, Fri 10am-12pm
- #9 Op-Shop: Mon, Wed and Fri - 9am - 2pm Saturday 9am to 12pm
- Rushworth Community Garden every Wednesday
- Rushworth Community House - Genealogy, every Friday from 9.30 to 12.30pm
- Colbinabbin Library: Wednesdays
- Colbinabbin Community Shed: most Thursdays (old Shire Depot), 10am
- Rushworth Band practice: 7.30pm every Monday night
- Stanhope Walking Group: Tuesdays at 9.30am at McEwen Place
- Stanhope Community Garden: Wednesdays 8.30 to 9.30am
- Stanhope: 1st Sunday of month from 8.30am
- Rushworth Market: 3rd Saturday of month - 8.30am to 1pm
- Rushworth ART Depot (RAD) - every Market day - Sat 10am -1pm
- Murchison CFA: Meeting 1st Monday 8pm - training on 3rd Monday 6.30pm
- Murchison Community Garden: Wednesdays 9am - 11am
- Rushworth Museum: every Saturday 10am-12 noon, 1st and 4th Sunday 11am - 1pm
- Rushworth & District Community Bank Board: meets 1st Tuesday monthly, at 6pm
- Rushworth Events Inc: meets bi-monthly, third Wednesday at 7pm
- Rushworth Community Walking Group: Thurs 8 - 9am meet at front of Waranga Health
- Stanhope Mens Shed: Mon - Wed - Fri 9am - 12 noon
- Murchison Mens Shed: Wednesdays 10am – 3pm
- Rushworth Garden Lovers Club meet 3rd Thursday Month 1.30pm at old Senior Citizen's building
- Friends of the Hostel: Third Monday 1.30pm monthly
- Alcoholics Anonymous(AA) meetings, 14 High st, Rushworth, Thursdays 7pm
- Stanhope: Chris's exercises at Seniors: Mondays 10.45am
- Rushworth: Chris's exercises at Rushworth Community House Mondays 1pm - 2pm
- Colbinabbin: Chris's exercises at Colbinabbin Hall Mondays 3.30pm - 4.30pm

Local clubs or groups who would like to display their event, occasion, community service, entertainment, meeting or opening times, give Waranga News a call or email to be included in our events calendar.

LOCAL SERVICE
PHONE NUMBERS

POLICE or FIRE.....Emergency.....000
Non-emergency 13 1444
AMBULANCE.....Emergency.....000
Non-emergency...13 3009
SES: (storm & flood).....13 2500
DOCTORS:
Murchison Medical Centre.....5826 2575
Rushworth Medical Centre..... 5856 1329
Stanhope Telecare Medical Centre
4800 5291
Waranga Medical Centre..... 5851 8400
HEALTH:
Stanhope Health.....5857 0451
Waranga Health5851 8000
Nurse on call..... 1300 606 024
HELP:
Lifeline.....13 1114
Kids Helpline.....1800 551 800
POLICE:
Rushworth.....5856 1000
Murchison.....5826 2222
Colbinabbin.....5856 1000
SUPPORT SERVICE:
St Vincent de Paul.....0417 597 468
WARANGA NEWS OFFICE.....5856 1120

ADVERTISING DEADLINES

FOR NEXT EDITION - 1 May
Display Ads: Friday, 25 April
Classified: Monday, 28 April
wnews@iinet.net.au

Waranga News



A Voluntary Community Newspaper

Printed by Maxam Printing, Shepparton
Published by Mary Jo Fortuna OAM,
of 3 Phillips Street, Rushworth, 3612 for
Waranga News Incorporated
(ABN 45 086 403 564)
Office Hours: Mon, Wed & Fri
9.30am - 5.30pm
(All day Mon & Tues of production week)
33 Moora Road, Rushworth.
Postal address: **PO Box 53, Rushworth, 3612**
E-mail address: wnews@iinet.net.au
Website: www.wnews.org.au
Advertising & Accounts: (03) 5856 1120
Editor: 0407 561 311
Annual subscription: Online \$30;
Posted \$65.00 (inc cost of postage)

Advertising in the Waranga News supports your business AND your community call 5856 1120 or email wnews@iinet.net.au

Your Council News

f @CampaspeShireCouncil
 #campaspeshire
 P: 1300 666 535 | 03 5481 2200
 E: shire@campaspe.vic.gov.au
www.campaspe.vic.gov.au

Easter waste collections

Campaspe Shire waste collection services will remain unchanged during the Easter period.



Coming Up Council meeting | 6pm Tuesday, 20 May 2025 | Echuca Civic Centre
Meetings can be streamed live: www.campaspe.vic.gov.au/livestreaming

Immunisation Sessions

By appointment only.

Register at campaspe.vic.gov.au/immunisations

If you are feeling unwell or have any cold or flu-like symptoms, you must cancel or reschedule your appointment.

Wednesday, 16 April

• 9.00 – 10:30am | Kyabram Senior Citizens' Centre

Thursday, 17 April

• 5.30 – 6:30pm | Echuca Library

Monday, 28 April

• 9.00 – 10:30am | Tongala Shire Hall

• 11.30am – 12 noon | Stanhope Community Health Centre

Employment

#campaspecareers

- Emergency Management Coordinator
- Customer Service Officer
- Health Safety and Wellbeing Business Partner
- Early Childhood Educators
- Relief, Resilience and Recovery Coordinator

For positions currently open and application details, visit Council's website.

Waranga Rail Trail is now open!



The Waranga Rail Trail is now open to the public. The project, completed in conjunction with Greater Shepparton City Council and with funding from the Federal Government's Local Roads and Community Infrastructure Program and the Black Summer Bushfire Recovery Grant Program, offers a 19km trail from Rushworth to Murchison. An official opening is scheduled for 17 May 2025 in Rushworth.

Now Open

For all open projects and applications, visit: www.campaspe.vic.gov.au/nowopen



Maternal and Child Health (MCH) and Immunisation services surveys

Consultation and engagement regarding Council's Maternal and Child Health (MCH) and Immunisation services is now underway.

Council is seeking to understand service users' opinions and what matters most to them in relation to the delivery of these services, through two surveys. You can have your say by completing one or both; surveys close midnight, Monday 21 April.

Community Grants Round One

Round One of the 2025-26 Community Grants program is now open. The program offers up to \$4,000 of financial support for community groups, organisations and associations with a broad range of projects to encourage participation in communities. Applications close 5pm, Thursday, 24 April.

Campaspe Food Network survey

The Campaspe Food Network wants to hear from you about the issues and opportunities you see for the food system in Campaspe Shire. The aim of this survey is to capture community need and inform any future actions. This survey closes Friday, 16 May 2025 at 5pm.

Ripple Fest volunteers sought

Want to be part of upcoming arts festival Ripple Fest?

Council is looking for volunteers to help bring this exciting arts festival to life in Rochester and Echuca in May.

You can register to volunteer by completing the Expression of Interest in the Now Open section on Council's website.



Business workshop opportunities to assist small business owners:

Are you looking to enhance your business skills and network with other local entrepreneurs?

Campaspe Shire Council offers a variety of business workshops designed to support and grow your business. Our workshops cover a range of topics, including marketing, social media and digital content. Upcoming workshops include:

Canva for Business

Canva can be a valuable tool for creating marketing and branding assets for small business owners.

Join Briana from Mingle Media for a workshop that will introduce you to Canva and how to use it to help your business achieve results. When: Thursday, 8 May from 12:30-2pm Where: Echuca Library. Cost: \$20 per business.

Social Media for Business

Join Briana from Mingle Media for an advanced workshop during which you will gain insights and skills to elevate your social media game. Learn to conquer algorithms and stand out in your customers' news

feeds.

When: Thursday, 5 June from 6:30-8pm.

Where: Kyabram Club. Cost: \$20 per business.

Creating Live Video for Business

Join Briana from Mingle Media and learn the techniques, camera angles, equipment, and themes to engage your audience.

When: Tuesday, 17 June from 12:30-2pm.

Where: Echuca Library. Cost: \$20 per business.

Bookings: www.campaspe.vic.gov.au/businessworkshops



Sports Report

Proudly sponsored by

KANANGRA ACCOMMODATION

CFNC - getting on board for season 2025

Welcome back to another year of footy and netball at CFNC. Despite lack of weekly emails there has been a lot happening around Colbo... practice matches, babies being born, new members and planning ahead for a big 2025 season!

A big congratulations and welcome to the newest future hoppers:

Greta Barlow, Juniper Van Ruiswyk, Maggie Weeks, Edward Morrow, Tex Hill and Daisy Tuohey.

Junior players wanted

The club is still looking for junior players to join Colbo for the 2025 season in both the Under 18 football side and Under 17 netball side. If you know of anyone keen, please get in touch with:

Hugh Barlow (junior footballers) - 0427 615 559

Carlie Ryan (junior netballers) - 0417 351 918

NetSetGo

Coach: Katherine Jamieson

Sessions are all about enjoyment while helping kids learn new netball skills.

Register your interest (can do one form for multiple kids in the family).

Dates: Thursday 24 April - Thursday 3 July
Eleven week term giving one week for catch up if required due to weather.

Where: Colbo Rec Reserve Netball Courts

When: 4.30pm - 5.15pm

What to bring: Water bottle and please wear runners.

Cost - free unless you are wanting the NetSetGo pack, then there is a cost for this and requires registration via the official NetSetGo program.

Great competition at Speedway

What a great night of racing on Saturday 12 April. The track was mint and the weather was perfect. There was a great field of classes and racing was on point.

The GV Mods feature, sponsored by Provac Poultry, and all the mods were keen to get a podium position, each heat with different winners. The boys all put on a great show.

The VSC unlimited sedans put on some fast racing and even though there were only six cars in the field, the racing was fast, clean and competitive.

The ladies as always put on a great show with everyone on the edge of their seats not knowing who would win.

VSC standard juniors had a good group of cars and they are getting quicker with every lap they experience. Congratulations to Liam Callanan on his first win. He drove well all night, and was a well deserved winner.

Sports sedans had a smaller group running but also putting on a great night's racing and not knowing who would win. Productions also with a good field of cars and some fast, smooth racing.

Auskick

Coach: Nick Knight

Dates: Thursday 24 April- Thursday 3 July

Where: Colbo Footy Oval

When: 4.30pm - 5.30pm

What to bring: Water bottle

Eleven sessions planned subject to weather. If you are keen to join and are not already in the group chat, get in touch with Nick or send us a message on Facebook and we'll add you in. There is no cost to join the AusKick program unless you want to receive the pack which you are required to sign up here for (price and inclusions can be found via the link).

2025 merchandise

This year we have given the merchandise a revamp with a new supplier and some new designs. They are now available on the Breech Apparel Online Store and can even be delivered to your door!

We will be getting in some sample sizes of the jumpers/hoodies and training tops in the next couple of weeks. These will available to try on at the bar.

Rugby jumpers and grey long sleeves are still available however they are not on the online store due to different suppliers. These will be available to purchase at the bar in the coming weeks.

Kids football jumpers:

If you're wanting to order a kids size footy

jumper get in touch with Sportspower Rochester and they will place the order for you - rochester@sportspower.com.au

Youth first aid

The Campaspe Youth Team are excited to announce their upcoming first aid training session as part of the Up Skilled: Youth Training Program.

This initiative aims to provide young people in the Campaspe region with essential skills to enhance their employability and independence. This program is suitable for the young participants at your club, committee, or association.

Date: Wednesday, 16 April

Time: 9am – 4:30pm

Location: headspace, Echuca, 451 High Street, Echuca VIC 3564

Eligibility: Aged 15-25 living, working, or studying in Campaspe

Register: 'Up Skilled': Youth Training Program Campaspe Shire Council

Social Calender

Upcoming Events

1 May - Round 3
'The Suburban Football'
3 May - Round 3 - Bus trip
LBU Mens Health Mental Health Night
17 May - Round 5 - Family Night
24 May - Round 6
Annual Ball - Bendigo



- Fully equipped workshop
- Auto parts
- Towing
- 24hr Roadside assistance and recovery
- Trailer Hire
- Courtesy Vehicles
- Tyres repairs
- Tyre & Wheel alignments

2 Williams Street (cnr Ross St), TATURA
Mobile: 0400 681 819
BH: 5824 1428
motormobile@bigpond.com

RFNC - Welcome to season 2025 at Iron Bark Stadium

With a new President and many new and old committee members, amazing volunteers and all our fantastic sponsors on board for this year the club is looking forward to an exciting and successful year ahead.

Coaches for 2025

Netball

Net Set Go - Sharee Starling
U/11 - Emma Francis
U/13 - Shanae Baldwin

U/15 - Sharee Starling
U/17 - Amy Francis
C Reserve - Sharon Gleeson/Helene Perry
C Grade - Montana Mylon
B Grade - Caitlin Brown /Mikaela Hanson

A Grade - Sharee Starling
Football
U/18 - Ryan Raglus
Reserves - Daniel Kelsey
Seniors - Mark Wheatley

Practice match great moral booster

A practice match on 29 March saw Reserves and Seniors playing Rumbalara. The game went well as the Tigers showed their prowess and showed the opposition they are a great contender for finals this year. They gelled through the

centre getting the ball down to the goals. However their kicking needs some work with twenty-four points added to their score. It was still great to watch the team contest well and follow through.

Go Tiges!



Round 1 - Saturday 12 April

First round of the year saw U18 footballers playing a top game against Murch/Toolamba and the rest of the teams against playing Avenel.

Netball

11/U

Rushworth 7 def Avenel 6

Everyone played an enjoyable, great game.

Best on court - Mason Jarrett

2nd - Olivia Rose

3rd - Amity Saunders



Stella Balmer U13

13/U

Rushworth 35 def Avenel 11

The Under 13s had a great start to their season with a solid win over Avenel. The girls did an excellent job all over the court and their teamwork and support really stood out.

1st incentive - Sophie Garvey, for a great game down the attacking end.

2nd incentive - Charlii Rose for her strength and determination in goals.

3rd incentive - Lucy Williams for an excellent job in wing-attack.

15/U - Bye

17/U

Rushworth 32 def Avenel 13

The girls played well together with Tyra and Matilda consistent in the defensive thirds with great hands over the ball and good intercepts! Mikayla and Emma goaled well and showed

strength. Well done

1st incentive - Tyra

2nd incentive - Matilda

3rd incentive - Mikayla

Emma got the chocolate!

C Reserve

Rushworth 28 lt Avenel 56

After a few years of not filling a C Reserves team, the club are back playing. In lovely hot conditions for the first game this season the club is proud of the efforts the team displayed despite the end result not going our way. The girls are excited and looking forward to the season ahead.

Incentives - Emma Thompson, Millie Newton and Rebecca Griffin.

C Grade

Rushworth 26 lt Avenel 46

C Grade faced a tough challenge against Avenel this week, unfortunately walking away with a loss. Despite the score, the teams spirit was high, with every player leaving it all on the court.

Incentives: Anita Barlow, Bella O'Dwyer and Kiarrah Lehmann

B Grade

Rushworth 23 lt Avenel 39

B Grade girls hit the ground running and the rolling subs were coming thick and fast in the heat of the day. First game of the season showed a very strong baseline and this will be a team to watch this year.

1st incentive - new recruit Taylor Gundy

2nd incentive - Crystal Pateman with a stellar performance as always.

3rd incentive - Grace Barlow, one of our young girls playing her first game of senior netball. She absolutely came out of her shell in the third quarter and wowed us all in goals.

A Grade

Rushworth 39 def Avenel 38

Best on court - Ashlyn Materne

2nd - Lilly Waasdorp

3rd - Montana Mylon

The girls were excited for their first game but concerned about playing in the heat. They started really well and got an early lead and maintained it for most of the match until Avenel stepped up. The girls kept their heads and hung in to crawl over the line.

Ash and Lilly were outstanding in defence

and the goalers were made to work for every pass showing great composure. The mids rotated really well with everyone playing their role. Well done to the girls.

Football

10/U - Bye

18/U

Rushworth 46 lt Murch/Toolamba 71

This was a great game to watch. The juniors played their hearts out with guts and determination.

Best Players - Angus Maher, Tighe Clarke, Riley Knight, Flynn Clarke and James Edward.

Reserves

Rushworth 38 lt Avenel 125

Seasoned veterans were raring to go, with club stalwart Josh Newton captaining the side once again. The hot weather returned and the boys contested, never dropping their heads. Avenel ran away handy victors, although the third quarter would tell a different tale.

With a flock of newcomers, the boys fought hard all day, getting to know names on the fly and using a few old mates along the way. There were great signs at times for the season ahead.

Best Players – Jack Keane, Aiden Williams, Josh Newton and Kade Dearing

Seniors

Rushworth 69 lt Avenel 94

Rushworth showed plenty of good passages of play during the game but could not turn the ball over enough.

Best Players – Cooper Horsfall, Ryan Beale Isaac Griffen, Liam Francis, Liam Adlington and Shaun Young.

Rushworth Social Calendar

3 May - Round 4

Ladies Day and 'Mr Rushworth'

17 May - Round 6

Bucking bull, Western night

21 June - Round

Sponsors Day and Player Calcutta

RFNC - U18s take on Murchison

Rushworth U18s took on Murchison/Toolamba in a challenging match. The scores did not indicate the courage and tenacity the boys showed during their time on the ground. Well done to the boys for their efforts in their first round match.



Congratulations to Jac



Reserves and Seniors vs Avenel

The Reserves and Seniors played remarkable games against Avenel's challenging sides. The boys tackled well on occasions. Their skills were tested and follow-up training will be on the cards for the teams. Come along on a Wednesday night to support your favourite Tigers!

GO TIGERS



Sam Birrell pulls on the boots for the Tigers

Federal Member for Nicholls, Sam Birrell MP, pulled on the jumper for Rushworth on Wednesday 9 April as part of his mission to train with every football and netball club in Nicholls.

Mr Birrell has spent the last three years pursuing his goal and lined up with the Tigers ahead of their Round 1 clash.

“It was a wonderful night pulling on the boots for the Tigers and the club definitely put me through my paces,” Mr Birrell said.

Mr Birrell said he was on the home stretch to completing the goal and had trained with over forty clubs.

“Training with clubs allows me to hear directly from locals and hear what’s important to them and their town,” Mr Birrell.

“I join the clubs for dinner following training and I get to meet with people, hear about their jobs, their families and what matters to them,” Mr Birrell said.

Mr Birrell said it was fantastic to

see the Tigers rebuild the club and are looking strong for the season ahead.

Visiting sporting clubs has also helped Mr Birrell with his advocacy to all levels of government to help support facility upgrades.

“Sporting clubs are more than just a game they are vital community hubs that promote social and physical wellbeing and deserve investment from governments,” Mr Birrell said.

“Too often club facilities including change rooms for women and girls are nonexistent or are not up to standard and this is something that needs to be addressed by all levels of government.

Mr Birrell thanked Rushworth for having him and wished them the very best for the season ahead.



60-year milestone for some old remaining Tigers

Rushworth Football Club endured a 30-year premiership drought after 1935 in the powerful Goulburn Valley Football League.

Moving to the Heathcote District Football League for the 1965 season, the club won the flags in both Seniors and Seconds competitions, sparking a night of spirited celebrations by the drought-breaking players and their supporters.

The upcoming season will mark sixty years since the exciting day and night. Naturally many of those players have taken their final rest, but all will be warmly remembered by those who remain. Successful sporting teams create extraordinary bonding even when life takes the players on very divergent pathways.

Murray Hitchcock (the team vice-captain), Ivan Baldwin, Paul Barlow, Ralph Barlow, Robert Betson, Graeme Hageman,

Bill Heath, Malcolm McLeod, John O'Donnell, Wes Ristrom, and Jim Strain (11 in all) will recall team-mates the late Bill Cruz (captain-coach), Graeme Collard, Ian Coyle, Howard Hawking, Peter Home, Alec Horne, Graeme Johansen and the nineteenth and twentieth men Jamie Williams and Peter Keogh.

Players were in short supply. With a few injuries across both teams, Peter had to occupy the bench after winning the Seconds Grand Final earlier in the day. Two flags inside five hours. What an honour!

Joining Peter on the list of Seconds players now gone are the late Len “Tony” Cruz (captain), Rob Borger, Peter Cleary, Barry Howard, Linton Gleeson, Frank

Leggett, John Maloney, Les Morgan, Mick Quirk, Fred Smith, Dick Talbot, and John P. Williams.

The remaining seven victorious Tiger Seconds players are Bill Barlow, Michael Barlow, Ross Coyle, Les Hoyling, Lyle Parker, Ross Williams and Ken Wilson.

Over the years the two teams have come together a few times, including in 2015 to mark fifty years, but a sixty-year reunion of any sporting team is a truly remarkable event.

Some of Rushworth’s regular club reunion organisers are giving thought as to how best to recognise the extraordinary milestone during the upcoming season. Watch this space.

Nesting boxes for wildlife along Waranga Rail Trail

The Waranga Rail Trail has barely been open two weeks, and already people have flocked from near and far to take the opportunity to ride or walk part of, or all, the 19 km trail which follows the alignment of the decommissioned railway line from Rushworth to Murchison.

Opened to the public on 1 April, the trail was funded by the Australian Government’s Local Roads and Community Infrastructure Program and the Black Summer Bushfire Recovery Grant Program.

Part of the charm of a journey along the Waranga Rail Trail is the chance to view the area’s wildlife and this was further enhanced recently when Rushworth Field & Game members spent a day installing twenty-five new wildlife nesting boxes along the new section of the trail, after receiving approval from VicTrack and Council to do so.

It’s hoped that the boxes will not only be used by local wildlife but also allow tracking and recording activity through the Delta App.

Opening of Trail

An official opening ceremony for the Waranga Rail Trail will be held at the start of the trail in High Street, Rushworth, on 17 May at 10am to coincide with the monthly Rushworth market.



Photo - (L-R) Rushworth Field & Game members Kel Perry, Geoff Hawking, Graeme Wall, Charlie Cerchi, Kevin McLeod and Neville Barker with new nesting boxes before their installation along Waranga Rail Trail. (Photo by Sharon Perry.)

Colbo's Autumn Fest in autumn weather



Claire Tuohey and Cathy Hill.



Shoes off. Line up. Be patient and your turn will come.



Dean Wallace and Tim Hill waiting to serve you.



Shannon Hill and Anne McEvoy.



Rhonda, Ray, Shell and Paul.

It was indeed an Autumn Fest with the weather just perfect for a family day at the Colbinabbin Rec Reserve - and everything provided to make it a Fest.

The multitude of children were well catered for with a jumping castle, barbecue and ice-creams. Amelia May entertained with her singing with a dance floor provided for anyone willing to get up, jump around and wave their arms in the air (or whatever way you prefer to dance).

A very delicious two course spit roast with roast vegetables and cauliflower and cheese was followed up with a choice of three sweets.

Drinks were available at bar prices.

The organisers are to be congratulated on a job well done.

It was a great night to kick off the 2025 Colbo football and netball season.



Amelia May entertains.

Rushworth Easter Heritage Festival

This free family-friendly festival is run by volunteers to benefit our community and support local clubs and businesses.

Stroll down High Street, visit the stalls and the food court and enjoy the free entertainment. Check out the great displays of steam machinery and vintage and classic cars and trucks and stop to cast a vote for your favourite vehicle.

Take part in the Easter Bonnet and Doggy Catwalk competitions and from there it's a short walk across the road to the Wood Auction where you can buy your winter supply of wood and support Shearing for Kids with Cancer.

At 1pm find a vantage point anywhere along High Street to see the

Grand Parade led by the fabulous Moora Working Draught Horse Clydesdales.

The Easter Bunny makes an appearance, and the steam engines and vintage cars join the parade to finish off the day.



PROGRAM

8.30am

Festival Opens

9.00am

Easter Egg Hunt

10.00am

Easter Bonnet Parade

Competition

10.30am

Doggy Catwalk Competition

11.00am

Wood Auction by Shearing for

Kids with Cancer

1.00pm

Grand Parade

ALL DAY

Music by True Country

Food & Coffee Vans

Art Exhibition

First Aid Station



located at 35 High street

SPONSORS

The Rushworth Easter Heritage Festival Committee would like to thank all of our sponsors for their generous support

Bolton Estate Agents
Colbinabbin Country Hotel
General Store Rushworth
Goulburn Valley Mulching and Slashing
Kanangra Accommodation
RENZ Support Services
Shire of Campaspe



Community Bank Rushworth & District



DONATIONS

We have also received many generous donations from businesses in Rushworth and surrounding towns. Your support is greatly appreciated.

Made for more excitement

Victoria Police is made for ambitious people looking for a career with more challenges, excitement, purpose, and possibilities.

police careers

Authorised by the Victorian Government, 1 Treasury Place, Melbourne

MADE FOR MORE